



# HIV/AIDS Surveillance Quarterly Statistics Pinellas and Pasco Counties (Area 5)

July 2006

**Jeb Bush** \* Governor  
**M. Rony Francois, MD, MSPH, PhD** \* Secretary of Health  
**Claude M. Dharamraj, MD, MPH** \* Pinellas County Health Department Director  
**Lisa Cohen** \* Pinellas & Pasco Counties HIV/AIDS Program Coordinator  
**Beth Sudduth, MPH** \* Area 5 HIV/AIDS Surveillance Program Manager



## National Latino Conference Underscores High HIV/AIDS Rates Among Latinos

Latinos comprise 14 % of the US population but account for 19 % of all AIDS cases reported through 2004. In 2004, the AIDS rate among Latinos was more than three times the rate among non Hispanic white men, and the AIDS rate among Latinas was more than five times the rate of non Latina whites.

In 1985, racial and ethnic minorities accounted for 45 % of all AIDS cases diagnosed in the United States, but by 2004, that number had jumped to 71 %, a 25 % increase. "That is shameful, that should not have happened," said Dr. Antonio Estrada, Director of Mexican American Studies at the University of Arizona in Tucson, Arizona. "If we had been doing our jobs right, perhaps, it wouldn't have. More importantly, if the government had funded us at the right level, this would not have happened."

Dr. Gene Copello, Executive Director of The AIDS Institute, said: "This meeting is reminding us once again that HIV is a disproportionate and growing concern among Latinos. Access to culturally competent and culturally specific HIV prevention, treatment, and care programs are needed to serve this population. Access to quality services and programs is the key to addressing HIV/AIDS in this and all groups impacted by the epidemic."

*Source:* The AIDS Institute (July 25, 2006)



**SABER es PODER**

**Infórmate. Hazte la Prueba del VIH.**

KNOWLEDGE IS POWER. GET THE FACTS. GET TESTED FOR HIV

OCTOBER 15TH, 2006

DÍA NACIONAL LATINO POR LA  
CONCIENCIACIÓN DEL SIDA  
NATIONAL LATINO AIDS AWARENESS DAY

National Latino AIDS Awareness Day is a project of the Latino Commission on AIDS in collaboration with member organizations. Visit [www.mlAAD.org](http://www.mlAAD.org)

Join us!

We look forward to seeing you there!



*The West Central Florida HIV Latino Leadership Strategic Planning Forum*  
**Rompiendo Cadenas: Saber Es Poder Forum** will be held on Thursday, **October 5, 2006**, at the Lion's Eye Institute, located at 1410 21<sup>st</sup> Street in Tampa. Breakfast and lunch will be provided for those attending free of charge.

If you have any questions, please contact **Vivian Ramirez-Aquino**, HIV/AIDS Contract Manager, by phone (813-307-8015 x 6502) or email ([Vivian\\_aquino@doh.state.fl.us](mailto:Vivian_aquino@doh.state.fl.us)).



The Pinellas County Health Department HIV/AIDS Program is hosting a **Roundtable Provider Meeting** which is tentatively scheduled to take place on **September 26, 2006 at 9:30AM**. At this meeting we are encouraging all community based organizations and HIV providers to come and discuss the issues that they have with referrals and reporting, etc. The county health department staff will also give brief updates on the latest news/laws that everyone should be aware of.

Inside this issue:	
Pinellas HIV & AIDS statistics	2
Pasco HIV & AIDS statistics	3
Hillsborough HIV & AIDS statistics	4
Florida HIV & AIDS statistics	5
U.S. HIV & AIDS statistics	5
World HIV & AIDS statistics	5
HIV/AIDS Health Department Contact	6

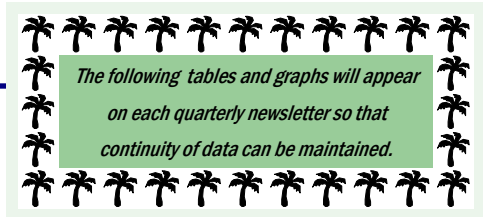
**Special points of interest:**

- Many thanks to all of you for your patience in the development of this quarter's newsletter and for your understanding as we adjust to a transition in surveillance staff. We would also like to take this opportunity to welcome **Lissette Arias** to our program as Sr. Word Processing Systems Operator.
- Call the HIV/AIDS surveillance office at 727-824-6903 if you have an HIV or AIDS case to report or if you need specific HIV/AIDS statistical information. **Beth Sudduth, Dante Ross, John Maldonado, Lissette Arias, or Nicole Rondon** are here to assist you with reporting and/or any statistics you might need! If you're a health care provider in Pasco County and need to report an HIV or AIDS case please call our office or you can call **Pamela Simmons** at the Pasco CHD at 727-862-0782 (x173).



# Pinellas County AIDS Statistics

All Pinellas County AIDS data is cumulative from 1981 to June 30, 2006  
 Source: Pinellas County Health Department, HIV/AIDS Surveillance


  
 The following tables and graphs will appear  
 on each quarterly newsletter so that  
 continuity of data can be maintained.

**Table 1: AIDS Cases — by RACE**

Race	Adults	Pediatric	Total
White	2728 (68%)	13 (48%)	2741 (68%)
Black	1044 (26%)	12 (45%)	1056 (26%)
Hispanic	176 (5%)	2 (7%)	178 (5%)
Legacy Asian/Pacific Is.	11 (0%)		11 (0%)
Nat. Hawaiian/Pacific Is.	1 (0%)		1 (0%)
Am.Indian/AK. Native	7 (0%)		7 (0%)
Asian	2 (0%)		2 (0%)
Multi-race	20 (1%)		20 (1%)
<b>Total</b>	<b>3989 (100%)</b>	<b>27 (100%)</b>	<b>4016 (100%)</b>

**Table 2: AIDS Cases — by AGE**

Age	Cases (%)	Deaths
0-4	20 (0%)	15 (56%)
5-12	7 (0%)	
13-19	24 (1%)	
20-29	592 (15%)	
30-39	1677 (42%)	2222 (56%)
40-49	1155 (29%)	
50-59	396 (10%)	
60-64	83 (2%)	
65-69	40 (1%)	
70+	22 (0%)	
<b>Total</b>	<b>4016 (100%)</b>	<b>2237 (56%)</b>

**Table 3: AIDS Cases — by Adult Risk Categories**

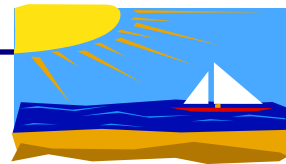
Risk Factors (adults)	Males	Females	Total
Gay/Bisexual Men	2320 (69%)		2320 (58%)
Injecting Drug Users	392 (12%)	193 (30%)	585 (15%)
Gay/ Bi Male & IDU	247 (7%)		247 (6%)
Heterosexual Contact	202 (6%)	373 (58%)	575 (15%)
Transfusion Recipients	28 (1%)	25 (4%)	53 (1%)
Coagulation Disorder	12 (0%)		12 (0%)
Risk Not Reported	145 (5%)	52 (8%)	197 (5%)
<b>Total</b>	<b>3346 (100%)</b>	<b>643 (100%)</b>	<b>3989 (100%)</b>

**Table 4: AIDS Cases — by Pediatric Risk Categories**

Risk Factors (peds)	Males	Females	Total
Mother with HIV	10 (77%)	13 (93%)	23 (85%)
Hemophilia	2 (15%)		2 (7%)
Transfusion	1 (8%)		1 (4%)
Risk Not Reported	0 (0%)	1 (7%)	1 (4%)
<b>Total</b>	<b>13 (100%)</b>	<b>14 (100%)</b>	<b>27 (100%)</b>

# Pinellas County HIV (only) Statistics

All Pinellas County HIV data is cumulative from 7/1/97 to June 30, 2006  
 Source: Pinellas County Health Department, HIV/AIDS Surveillance



**Table 5: HIV Cases — by RACE**

Race	Adults	Pediatric	Total
White	701 (56%)	2 (29%)	703 (56%)
Black	449 (36%)	4 (57%)	453 (36%)
Hispanic	76 (6%)	1 (14%)	77 (6%)
Legacy Asian/Pacific Is.	2 (0%)		2 (0%)
Nat. Hawaiian/Pacific Is.	3 (0%)		3 (0%)
Am.Indian/AK. Native	3 (0%)		3 (0%)
Asian	5 (0%)		5 (0%)
Multi-race	17 (2%)		17 (2%)
<b>Total</b>	<b>1256 (100%)</b>	<b>7 (100%)</b>	<b>1263 (100%)</b>

**Table 6: HIV Cases — by AGE**

Age	Cases (%)	Deaths
0-4	3 (0%)	0 (0%)
5-12	4 (0%)	
13-19	56 (5%)	
20-29	313 (25%)	
30-39	454 (36%)	38 (3%)
40-49	305 (24%)	
50-59	105 (8%)	
60-64	13 (1%)	
65-69	4 (0%)	
70+	6 (1%)	
<b>Total</b>	<b>1263 (100%)</b>	<b>38 (3%)</b>

**Table 7: HIV Cases — by Adult Risk Categories**

Risk Factors (adults)	Males	Females	Total
Gay/Bisexual Men	593 (66%)		593 (47%)
Injecting Drug Users	64 (7%)	75 (21%)	139 (11%)
Gay/ Bi Male & IDU	54 (6%)		54 (5%)
Heterosexual Contact	85 (10%)	214 (60%)	299 (24%)
Transfusion Recipients	2 (0%)	1 (0%)	3 (0%)
Coagulation Disorder	0 (0%)		0 (0%)
Risk Not Reported	100 (11%)	68 (19%)	168 (13%)
<b>Total</b>	<b>898 (100%)</b>	<b>358 (100%)</b>	<b>1256 (100%)</b>

**Table 8: HIV Cases — by Pediatric Risk Categories**

Risk Factors (peds)	Males	Females	Total
Mother with HIV	3 (100%)	3 (75%)	6 (86%)
Risk Not Reported		1 (25%)	1 (14%)
<b>Total</b>	<b>3 (100%)</b>	<b>4 (100%)</b>	<b>7 (100%)</b>

# Pasco County AIDS Statistics

All Pasco County AIDS data is cumulative from 1981 to June 30, 2006  
 Source: Pinellas County Health Department, HIV/AIDS Surveillance



**Table 9: AIDS Cases — by RACE**

Race	Adults	Pediatric
White	570 (80%)	<b>3</b>
Black	82 (12%)	
Hispanic	56 (8%)	
Legacy Asian/Pacific Is.	3 (0%)	
Multi Race/Other	4 (0%)	
<b>Total</b>	<b>715 (100%)</b>	<b>3 (100%)</b>

**Table 11: AIDS Cases — by Adult Risk Categories**

Risk Factors (adults)	Males	Females	Total
Gay/Bisexual Men	318 (55%)		318 (45%)
Injecting Drug Users	77 (13%)	38 (28%)	115 (16%)
Gay/ Bi Male & IDU	67 (12%)		67 (9%)
Heterosexual Contact	58 (10%)	84 (61%)	142 (20%)
Transfusion Recipients	13 (2%)	3 (2%)	16 (2%)
Coagulation Disorder	3 (1%)		3 (0%)
Risk Not Reported	41 (7%)	13 (9%)	54 (8%)
<b>Total</b>	<b>577 (100%)</b>	<b>138 (100%)</b>	<b>715 (100%)</b>

**Table 10: AIDS Cases — by AGE**

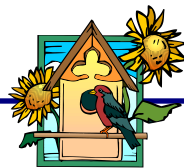
Age	Cases (%)	Deaths
0-19	9 (1%)	
20-29	92 (13%)	
30-39	308 (43%)	
40-49	202 (28%)	
50-59	78 (11%)	
60-64	8 (1%)	
65-69	11 (2%)	
70+	10 (1%)	
<b>Total</b>	<b>718 (100%)</b>	<b>363 (51%)</b>

**Table 12: AIDS Cases — by Pediatric Risk Categories**

Risk Factors (peds)	Total
Mother with HIV	3 (100%)
Risk Not Reported	
<b>Total</b>	<b>3 (100%)</b>

# Pasco County HIV (only) Statistics

All Pasco County HIV data is cumulative from 7/1/97 to June 30, 2006  
 Source: Pinellas County Health Department, HIV/AIDS Surveillance



*Due to the fact that some of the cell sizes for Pasco County were <3, some of the data has not been completely stratified.*

**Table 13: Adult HIV Cases — by RACE**

Race	Adults
White	177 (75%)
Black	34 (15%)
Hispanic	20 (9%)
Other/Unknown	4 (1%)
<b>Total</b>	<b>235 (100%)</b>

**Table 15: HIV Cases — by Adult Risk Categories**

Risk Factors (adults)	Males	Females	Total
Gay/Bisexual Men	89 (57%)		89 (38%)
Injecting Drug Users	11 (7%)	11 (14%)	22 (9%)
Gay/ Bi Male & IDU	10 (6%)		10 (5%)
Heterosexual Contact	19 (12%)	51 (65%)	70 (30%)
Risk Not Reported/Other	27 (18%)	17 (21%)	44 (18%)
<b>Total</b>	<b>156 (100%)</b>	<b>79 (100%)</b>	<b>235 (100%)</b>

**Table 14: Adult HIV Cases — by AGE**

Age	Cases (%)	Deaths
0-19	18 (8%)	
20-29	62 (26%)	
30-39	85 (36%)	<b>3 (1%)</b>
40-49	45 (19%)	
50+	25 (11%)	
<b>Total</b>	<b>235 (100%)</b>	

There have been <3 HIV pediatric cases reported for Pasco County as of July 1997. Therefore, the specific age group, race or risk cannot be identified at this time.



# Hillsborough AIDS Statistics

All Hillsborough County AIDS data is cumulative from 1981 to June 30, 2006  
 Source: Florida Department of Health, Bureau of HIV/AIDS



Table 16: **AIDS Cases — by RACE**

Race	Adults	Pediatric	Total
White	2851 (48%)	18 (23%)	2869 (47%)
Black	2242 (37%)	45 (59%)	2287 (38%)
Hispanic	855 (14%)	14 (18%)	869 (14%)
Legacy Asian/Pacific Is.	8 (0%)	8 (0%)	8 (0%)
Am.Indian/AK. Native	4 (0%)	4 (0%)	4 (0%)
Asian	2 (0%)	2 (0%)	2 (0%)
Multi-race	39 (1%)	39 (1%)	39 (1%)
<b>Total</b>	<b>6001 (100%)</b>	<b>77 (100%)</b>	<b>6078 (100%)</b>

Table 18: **AIDS Cases — by Adult Risk Categories**

Risk Factors (adults)	Males	Females	Total
Gay/Bisexual Men	2851 (61%)		2851 (48%)
Injecting Drug Users	594 (13%)	352 (27%)	946 (16%)
Gay/ Bi Male & IDU	377 (8%)		377 (6%)
Heterosexual Contact	479 (10%)	763 (58%)	1242 (21%)
Transfusion Recipients	28 (1%)	24 (2%)	52 (1%)
Coagulation Disorder	18 (0%)	1 (0%)	19 (0%)
Risk Not Reported	328 (7%)	176 (13%)	504 (8%)
<b>Total</b>	<b>4675 (100%)</b>	<b>1316 (100%)</b>	<b>5991 (100%)</b>

Table 17: **AIDS Cases — by AGE**

Age	Cases (%)	Deaths
0-4	60 (1%)	32 (42%)
5-12	17 (0%)	
13-19	43 (1%)	
20-29	1037 (17%)	
30-39	2503 (41%)	3196 (53%)
40-49	1641 (27%)	
50-59	565 (9%)	
60-64	111 (2%)	
65-69	55 (1%)	
70+	46 (1%)	
<b>Total</b>	<b>6078 (100%)</b>	<b>3228 (53%)</b>

Table 19: **AIDS Cases — by Pediatric Risk Categories**

Risk Factors (peds)	Males	Females	Total
Mother with HIV	33 (81%)	44 (96%)	77 (89%)
Hemophilia	3 (7%)		3 (3%)
Transfusion	4 (10%)		4 (5%)
Risk Not Reported	1 (2%)	2 (4%)	3 (3%)
<b>Total</b>	<b>41 (100%)</b>	<b>46 (100%)</b>	<b>87 (100%)</b>

# Hillsborough HIV Statistics

All Hillsborough County HIV data is cumulative from 7/1/97 to June 30, 2006  
 Source: Florida Department of Health, Bureau of HIV/AIDS

You can get Hillsborough and other Florida county data on the Florida Department of Health website:

[www.doh.state.fl.us](http://www.doh.state.fl.us)

(once at the site click on "AIDS/HIV")



Table 20: **HIV Cases — by RACE**

Race	Adults	Pediatric	Total
White	724 (36%)	4 (14%)	728 (35%)
Black	985 (48%)	20 (69%)	1005 (49%)
Hispanic	310 (15%)	5 (17%)	315 (15%)
Legacy Asian/Pacific Is.	1 (0%)	1 (0%)	1 (0%)
Am.Indian/AK. Native	3 (0%)	3 (0%)	3 (0%)
Native Hawaiian/Pacific Is.	2 (0%)	2 (0%)	2 (0%)
Asian	1 (0%)	1 (0%)	1 (0%)
Multi-race	17 (1%)	17 (1%)	17 (1%)
<b>Total</b>	<b>2043 (100%)</b>	<b>29 (100%)</b>	<b>2072 (100%)</b>

Table 22: **HIV Cases — by Adult Risk Categories**

Risk Factors (adults)	Males	Females	Total
Gay/Bisexual Men	690 (53%)		690 (34%)
Injecting Drug Users	90 (7%)	93 (13%)	183 (9%)
Gay/ Bi Male & IDU	63 (5%)		63 (3%)
Heterosexual Contact	201 (15%)	394 (54%)	595 (29%)
Transfusion Recipients	0 (0%)	0 (0%)	0 (0%)
Coagulation Disorder	2 (0%)		2 (0%)
Risk Not Reported	269 (20%)	241 (33%)	510 (25%)
<b>Total</b>	<b>1315 (100%)</b>	<b>728 (100%)</b>	<b>2043 (100%)</b>

Table 21: **HIV Cases — by AGE**

Age	Cases (%)	Deaths
0-4	21 (1%)	0 (0%)
5-12	8 (0%)	
13-19	85 (4%)	
20-29	565 (27%)	
30-39	700 (34%)	73 (4%)
40-49	477 (23%)	
50-59	155 (8%)	
60-64	40 (2%)	
65-69	12 (1%)	
70+	9 (0%)	
<b>Total</b>	<b>2072 (100%)</b>	<b>73 (4%)</b>

Table 23: **HIV Cases — by Pediatric Risk Categories**

Risk Factors (peds)	Males	Females	Total
Mother with HIV	14 (93%)	14 (100%)	28 (97%)
Coagulation Disorder	1 (7%)	0 (0%)	1 (3%)
<b>Total</b>	<b>15 (100%)</b>	<b>14 (100%)</b>	<b>29 (100%)</b>

# Florida HIV/AIDS Statistics

Source: Florida Department of Health, Bureau of HIV/AIDS  
 HIV/AIDS, STD & TB Monthly Surveillance Report, #262  
 If additional state data is needed please go to "www.doh.state.fl.us"

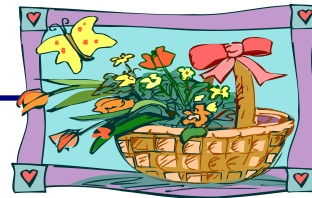


Table 24: **Cumulative HIV Case Counts for Florida**  
 (7/1/97-6/30/06)

	HIV	Deaths
<b>Total</b>	36386	1509 (4%)
Adult	36005	1504 (4%)
Pediatric	381	5 (1%)

Table 25: **Cumulative AIDS Case Counts for Florida**  
 (1981 through 6/30/06)

	AIDS	Deaths
<b>Total</b>	103311	56365 (55%)
Adult	101803	55516 (55%)
Pediatric	1508	849 (56%)

Table 26: **Cumulative HIV/AIDS Case Counts in Surrounding Counties**  
 (as of 6/30/06)

County	HIV	AIDS
Hillsborough	3280	6093
<b>Pinellas</b>	<b>1941</b>	<b>4006</b>
Polk	814	1737
Sarasota	337	997
Manatee	518	969
<b>Pasco</b>	<b>348</b>	<b>683</b>
Highlands	115	181
Hernando	88	198
Hardee	36	77

Table 27: **Cumulative HIV/AIDS Case Counts in the Top 7 Florida Counties**  
 (as of 6/30/06)

County	HIV	AIDS
Miami-Dade	15062	29138
Broward	8832	16180
Palm Beach	4476	9696
Orange	3942	6162
Hillsborough	3280	6093
Duval	2849	5256
<b>Pinellas</b>	<b>1941</b>	<b>4006</b>

## United States HIV/AIDS Statistics

Adults & Children estimated to be **living** with HIV/AIDS in U.S. in 2002: 980,000  
 Estimated number of adults & children **newly** infected with HIV in U.S. during 2002: 45,000

Table 28: **Cumulative HIV/AIDS Case Counts for U.S.**  
 (as of 9/30/05)

	HIV*	AIDS	% AIDS Deaths
<b>Total</b>	246,951	949,728	53%
Adult	241,923	940,282	53%
Pediatric	5,028	9,446	56%

(Source: Florida HIV/AIDS, STD & TB Monthly Surveillance Report, #262)

*Beth Sudduth and Nicole Rondon are responsible for compiling and editing the HIV/AIDS Surveillance Statistics for the Pinellas and Pasco County Health Departments on a quarterly basis. For further information regarding statistics, or questions regarding HIV or AIDS reporting, please contact Beth at (727) 824-6903*

(Source: Florida HIV/AIDS, STD & TB Monthly Surveillance Report, #262)

Table 29: **Cumulative HIV\* Cases of 5 Leading U.S. States**  
 (as of 6/30/04)

1. New York (12/00)	40853	(16%)
<b>2. Florida (7/97)</b>	<b>35138</b>	<b>(14%)</b>
3. Texas (2/94)	22738	(9%)
4. New Jersey (1/92)	17314	(7%)
5. North Carolina (2/90)	13036	(5%)

(Source: Florida HIV/AIDS, STD & TB Monthly Surveillance Report, #262)

\* Data only from those states where HIV is reportable & includes only persons reported with HIV infection who have not developed AIDS

Table 30: **Cumulative AIDS Cases of 20 Leading U.S. Cities/MSAs**  
 (as of 12/31/04)

1. New York City	153784	11. Newark, NJ	19363
2. Los Angeles area	55106	12. Dallas	18701
3. San Francisco	29789	13. Baltimore	18568
4. Washington DC	28758	14. Ft Lauderdale	15280
5. Miami	27964	15. Boston	12902
6. Chicago	27872	16. San Diego	12131
7. Philadelphia	25997	<b>17. Tampa-St Pete</b>	<b>10242</b>
8. Houston	23999	18. Detroit	9474
9. San Juan, PR	20474	19. West Palm Beach	9282
10. Atlanta	19578	20. Oakland, CA	9047

(Source: Centers for Disease Control, HIV/AIDS Surveillance Report, Vol. 16)

Table 31: **Cumulative AIDS Cases of 10 Leading U.S. States**  
 (as of 9/30/05)

1. New York	171276
2. California	138141
3. <b>Florida</b>	<b>100516</b>
4. Texas	67030
5. New Jersey	48178
6. Illinois	32334
7. Pennsylvania	31712
8. Georgia	29895
9. Maryland	28924
10. Massachusetts	18776
11. Maryland	28924
12. Massachusetts	18776

(Source: Florida HIV/AIDS, STD, & TB Monthly Surveillance Report, #262)

*Here are some useful Web links/sites for HIV/AIDS information:*

## World HIV/AIDS Statistics

From W.H.O. (www.who.org) & UNAIDS (www.unaids.org):

Reported World AIDS Cases as of 05//00: **2,201,468**

Estimated living World HIV/AIDS Cases as of 2004: **39.4 million**

Estimated new HIV infections in World in 2004: **4.9 million**

Estimated World deaths due to HIV/AIDS in 2004: **3.1 million**

Estimated Cumulative number of deaths in World due to HIV/AIDS: **25 million**



- <http://www.doh.state.fl.us>
- <http://www.cdc.gov>
- <http://www.who.int>
- <http://www.paho.org/english/aid/aidstd.htm>
- <http://www.iapac.org>
- <http://www.flairs.org/tcrs/aidslne.htm>
- <http://hivinsite.ucsf.edu>
- <http://www.hivatis.org/trtdglns.html>

- Florida HIV/AIDS statistics
- Centers for Disease Control
- World Health Organization
- PAHO: AIDS site
- Int'l Assoc of Physicians in AIDS care
- Florida AIDS Hotline site
- HIV/AIDS InSite Information
- HIV/AIDS treatment site



Florida law requires cases of AIDS to be reported by anyone who diagnoses or treats a person with AIDS, with a \$500 fine per case for failure to report. NOTE: A person who tests positive for Human Immunodeficiency Virus (HIV) on or after July 1, 1997 is reportable. Confidentiality is guaranteed. Please send your completed HIV/AIDS case report in an envelope marked "CONFIDENTIAL" to:

BETH SUDDUTH, MPH
PINELLAS COUNTY HEALTH DEPARTMENT
205 DR. M.L. KING STREET NORTH
ST PETERSBURG, FL 33701
(727) 824-6903 ; SUNCOM 513-1068
FAX: (727) 893-1681
EMAIL: BETH\_SUDDUTH@DOH.STATE.FL.US

If you need reporting forms, would like to have a brief HIV/AIDS Surveillance In-Service for your staff in your office, or would like to have your HIV/AIDS cases reviewed in your office, please call the above number and speak to Beth Sudduth, Dante Ross, Lissette Arias, Nicole Rondon, or John Maldonado.

HIV Infection and AIDS in the Deep South

THE US CENSUS BUREAU defines the Southern region of the United States as encompassing 16 states and the District of Columbia (Delaware, Maryland, West Virginia, Virginia, North Carolina, South Carolina, Georgia, Florida, Alabama, Mississippi, Arkansas, Tennessee, Kentucky, Louisiana, Texas, Oklahoma, and Washington, DC); the region extends from Delaware to Florida and from the East Coast to Texas. Six of these Southern states have demographically similar HIV/AIDS epidemics. These states (Alabama, Georgia, Louisiana, Mississippi, North Carolina, and South Carolina) also constitute the Deep South. The Deep South is historically defined as those Southern states that actively promoted slavery and whose agricultural and economic base was in cotton. This region is currently disproportionately affected by the HIV/AIDS epidemic. From 2000 to 2003, the number of new reported AIDS cases increased 35.6% in the Deep South, and only 4.0% in the other Southern states and 5.2% nationally (excluding the Deep South states). Incident AIDS cases decreased 0.4% in the Northeast, increased 1.7% in the Midwest, and increased 19.3% in the West, most of which was fueled by a 25.7% increase in California.

AIDS incidence rates are the most practical statistic to use for comparisons, because states are mandated to report AIDS cases; the reporting of HIV infection is voluntary so not all states provide this data. However, tracking new cases of HIV infection in addition to new AIDS cases is critical to defining the current epidemic because these 2 measures reflect different aspects of the epidemic. AIDS incidence includes individuals testing positive for the first time who meet the criteria for AIDS and previously diagnosed individuals who have progressed to AIDS. In contrast, the incidence of HIV infection includes individuals testing positive for HIV who do not meet the criteria for AIDS. HIV infection incidence trends among the 36 states that collected information on new HIV infection cases in 2003 suggest that the Deep South continues to be disproportionately affected by the spreading epidemic. In 2003, the rate of HIV infection per 100 000 population was 11.6 for the United States as a whole. In contrast, the rate of HIV infection per 100 000 was 14.7 for the Deep South, excluding Georgia. (Georgia was excluded because HIV reporting was initiated in Georgia in 2003 and the numbers were artificially low at 52 new cases.)

Compared with other regions of the country, it is clear that the HIV/AIDS epidemic is spreading rapidly in the Deep South. Furthermore, the Deep South has some of the highest death rates from AIDS in the country. All 6 Deep South states are among the 15 states with the highest AIDS death rates per 100 000 population. Because of these factors, it is critical to acquire an understanding of the epidemic in the Deep South. This knowledge is a necessary first step in determining effective methods for improving the situation.

Source: Reif, S., Geonnotti, K.L., & Whetten, K. (2006). American Journal of Public Health, 96(6), 970-973.



HIV/AIDS Surveillance Office
Pinellas County Health Department
205 Dr. M.L. King Street North
St Petersburg, FL 33701