



Jeb Bush * Governor
 John O. Agwunobi, MD, MBA * Secretary of Health
 John P. Heilman, MD, MPH * Pinellas County Health Department Director
 Lisa Cohen * Pinellas & Pasco Counties HIV/AIDS Program Coordinator
 Beth Sudduth, MPH * Editor of Pinellas County HIV/AIDS Surveillance Newsletter

Volume 14, Issue 1

August 6, 2004



PINELLAS COUNTY HEALTH DEPARTMENT
 205 DR. M.L. KING ST NO * ST PETERSBURG, FL 33701 * 727-824-6900

HIV/AIDS Surveillance Quarterly Statistics Pinellas and Pasco Counties (Area 5) July 2004

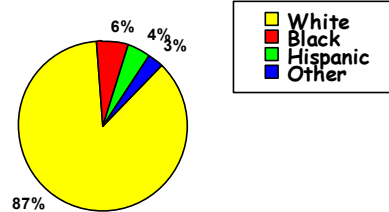
Current Pinellas & Pasco County (Area 5) Statistics

Mr. Spencer Lieb, Chief HIV/AIDS epidemiologist for the Department of Health in Tallahassee, was a featured speaker at the local Community Partnership Planning Meeting held at Florida Blood Services in St. Petersburg on July 23rd, 2004. It was an excellent presentation which consisted of an overview of what **epidemiology** is and how it is used to generate statistical information/reports that can be used to target specific HIV risk groups and HIV prevention messages.

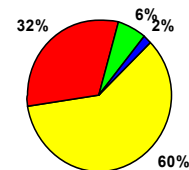
Throughout Mr. Lieb's presentation there were several slides that were very interesting and worth including in this newsletter. If you need an interpretation of the following graphs please do not hesitate to call our office. In addition, if you are interested in obtaining a copy of Mr. Spencer Lieb's slide-set presentation for Areas 5, 6 & 14 please either send him an email at Spencer_Lieb@doh.state.fl.us or send myself an email and we will send it along to you.

Epidemiology is the study of the distribution (*spread*) and determinants (*cause/risk factors*) of disease in populations.

Area 5 Adult Population by Race/Ethnicity (2000 census):
(N=1,088,298)



Area 5 Adult AIDS Cases by Race/Ethnicity, 2003
(N=242)



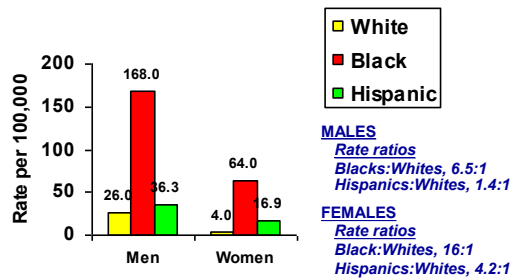
Per CDC 2002 estimates:

- *40,000 new HIV infections in the U.S.
- *~4,000 new HIV infections in Florida
- * 25% new HIV infections are in people under 25.
- * In 13 to 19-year-olds, the male-to-female ratio = 1:1
- * HIV/AIDS is the #1 cause of death in African Americans aged 25-44.

Per Florida DOH estimates:

- ~100,000 people are living with HIV in Florida;
- ~12,700 in Areas 5/6/14
- ~4,000 in Area 5 (Pinellas & Pasco)
- ~6,900 in Area 6 (Hillsborough, Hernando, Manatee)
- ~1,700 in Area 14 (Hardee, Highlands, Polk)

Area 5 Reported Adult AIDS Case Rates
(Per 100,000 Population) By Sex and Race/Ethnicity, 2003



HIV Prevalence Estimates, Florida, 2001

Approximately 1 in 168 (0.6%) Floridians are estimated to be currently living with HIV infection:

- 1 in 346 Whites
- 1 in 46 Blacks
- 1 in 176 Hispanics

We hope you have enjoyed receiving these newsletters. As editor of this newsletter I wanted to send our regrets in the delay of sending out quarterly newsletters this year. This has been the first newsletter we could complete since the December 2003 issue. We have been extremely busy in our surveillance office (due to staff changes, trainings, workload, etc.) so we were unable to keep up with the production of quarterly newsletters. However, it is my hope that, once again, we will be able to resume normal distribution of our quarterly newsletters. **Thank you so much for your interest in our statistics and your patience with us!** And, as always, please feel free to call us if you ever need specific HIV/AIDS data requests.

Inside this issue:	
Pinellas HIV & AIDS statistics	2
Pasco HIV & AIDS statistics	3
Hillsborough HIV & AIDS statistics	4
Florida HIV & AIDS statistics	5
U.S. HIV & AIDS statistics	5
World HIV & AIDS statistics	5
HIV/AIDS Health Department Contact	6

Special points of interest:

- In case you missed the very last page there have been several staff changes over the past few months. Please feel free to call any of the new staff in the surveillance office at 727-824-6903 and they will assist you as best as they can. Please be patient with them/us during this "training" period as they learn all of their new responsibilities/tasks! The most important change to note on your mailing lists is to change **Beth Gustafson** to **Beth Sudduth** ... although for the short duration mail will still be delivered under both names. Thanks!
- If you have an HIV or AIDS case to report for Pasco County cases please call **Michael Wydotis** at 727-869-3900 (x173).



Pinellas County AIDS Statistics

All Pinellas County AIDS data is cumulative from 1981 to August 2, 2004
 Source: Pinellas County Health Department, HIV/AIDS Surveillance

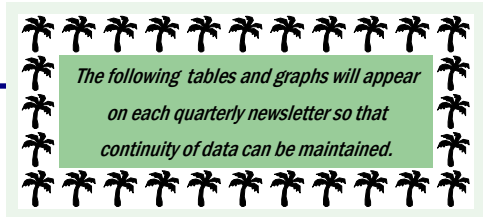


Table 1: AIDS Cases — by RACE

Race	Adults	Pediatric	Total
White	2663 (69%)	13 (50%)	2676 (69%)
Black	972 (26%)	11 (42%)	983 (26%)
Hispanic	171 (5%)	2 (8%)	173 (5%)
Multi-race	14 (0%)		14 (0%)
Legacy Asian/Pacific Is.	13 (0%)		13 (0%)
Am.Indian/AK. Native	7 (0%)		7 (0%)
Asian	1 (0%)		1 (0%)
Total	3841 (100%)	26 (100%)	3867 (100%)

Table 2: AIDS Cases — by AGE

Age	Cases (%)	Deaths
0-4	19 (0%)	15 (58%)
5-12	7 (0%)	
13-19	23 (1%)	
20-29	599 (15%)	
30-39	1682 (44%)	2197 (57%)
40-49	1059 (27%)	
50-59	349 (9%)	
60-64	73 (2%)	
65-69	36 (1%)	
70+	20 (1%)	
Total	3867 (100%)	2212 (57%)

Table 3: AIDS Cases — by Adult Risk Categories

Risk Factors (adults)	Males	Females	Total
Gay/Bisexual Men	2213 (68%)		2213 (58%)
Injecting Drug Users	403 (12%)	172 (29%)	575 (15%)
Gay/ Bi Male & IDU	252 (8%)		252 (7%)
Heterosexual Contact	183 (6%)	308 (53%)	491 (13%)
Transfusion Recipients	31 (1%)	25 (4%)	56 (1%)
Coagulation Disorder	13 (0%)		13 (0%)
Risk Not Reported	162 (5%)	79 (14%)	241 (6%)
Total	3257 (100%)	584 (100%)	3841 (100%)

Table 4: AIDS Cases — by Pediatric Risk Categories

Risk Factors (peds)	Males	Females	Total
Mother with HIV	9 (75%)	13 (93%)	22 (84%)
Hemophilia	2 (17%)		2 (8%)
Transfusion	1 (8%)		1 (4%)
Risk Not Reported	0 (0%)	1 (7%)	1 (4%)
Total	12 (100%)	14 (100%)	26 (100%)

Pinellas County HIV (only) Statistics

All Pinellas County HIV data is cumulative from 7/1/97 to August 2, 2004
 Source: Pinellas County Health Department, HIV/AIDS Surveillance

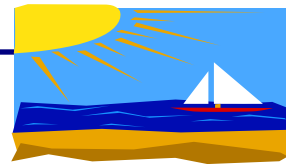


Table 5: HIV Cases — by RACE

Race	Adults	Pediatric	Total
White	595 (54%)	2 (33%)	597 (54%)
Black	433 (39%)	3 (50%)	436 (39%)
Hispanic	69 (6%)	1 (17%)	70 (6%)
Multi-race	12 (1%)		12 (1%)
Legacy Asian/Pacific Is.	3 (0%)		3 (0%)
Am.Indian/AK. Native	4 (0%)		4 (0%)
Asian	3 (0%)		3 (0%)
Total	1119 (100%)	6 (100%)	1125 (100%)

Table 6: HIV Cases — by AGE

Age	Cases (%)	Deaths
0-4	3 (0%)	0 (0%)
5-12	3 (0%)	
13-19	48 (4%)	
20-29	283 (25%)	
30-39	416 (37%)	34 (3%)
40-49	277 (25%)	
50-59	74 (7%)	
60-64	12 (1%)	
65-69	3 (0%)	
70+	6 (1%)	
Total	1125 (100%)	34 (3%)

Table 7: HIV Cases — by Adult Risk Categories

Risk Factors (adults)	Males	Females	Total
Gay/Bisexual Men	457 (59%)		457 (41%)
Injecting Drug Users	65 (8%)	69 (20%)	134 (12%)
Gay/ Bi Male & IDU	46 (6%)		46 (4%)
Heterosexual Contact	66 (9%)	166 (48%)	232 (21%)
Transfusion Recipients	3 (0%)	1 (0%)	4 (0%)
Coagulation Disorder	0 (0%)		0 (0%)
Risk Not Reported	137 (18%)	109 (32%)	246 (22%)
Total	774 (100%)	345 (100%)	1119 (100%)

Table 8: HIV Cases — by Pediatric Risk Categories

Risk Factors (peds)	Males	Females	Total
Mother with HIV	2 (100%)	3 (75%)	5 (83%)
Risk Not Reported		1 (25%)	1 (17%)
Total	2 (100%)	4 (100%)	6 (100%)

Pasco County AIDS Statistics

All Pasco County AIDS data is cumulative from 1981 to August 2, 2004
Source: Pinellas County Health Department, HIV/AIDS Surveillance



Table 9: AIDS Cases — by RACE

Race	Adults	Pediatric
White	544 (82%)	3
Black	69 (11%)	
Hispanic	49 (7%)	
Other/Unknown	5 (0%)	
Total	667 (100%)	3 (100%)

Table 11: AIDS Cases — by Adult Risk Categories

Risk Factors (adults)	Males	Females	Total
Gay/Bisexual Men	300 (55%)		300 (45%)
Injecting Drug Users	78 (14%)	35 (29%)	113 (17%)
Gay/ Bi Male & IDU	58 (11%)		58 (9%)
Heterosexual Contact	54 (10%)	67 (56%)	121 (18%)
Transfusion Recipients	13 (2%)	3 (3%)	16 (2%)
Coagulation Disorder	3 (1%)		3 (0%)
Risk Not Reported	41 (7%)	15 (12%)	56 (9%)
Total	547 (100%)	120 (100%)	667 (100%)

Table 10: AIDS Cases — by AGE

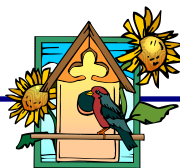
Age	Cases (%)	Deaths
0-12	3 (0%)	<3
13-19	4 (1%)	
20-29	94 (14%)	351 (53%)
30-39	298 (45%)	
40-49	182 (27%)	
50-59	61 (9%)	
60-64	8 (1%)	
65-69	12 (2%)	
70+	8 (1%)	
Total	670 (100%)	(53%)

Table 12: AIDS Cases — by Pediatric Risk Categories

Risk Factors (peds)	Total
Mother with HIV	3 (100%)
Risk Not Reported	
Total	3 (100%)

Pasco County HIV (only) Statistics

All Pasco County HIV data is cumulative from 7/1/97 to August 2, 2004
Source: Pinellas County Health Department, HIV/AIDS Surveillance



Due to the fact that some of the cell sizes for Pasco County were <3, some of the data has not been completely stratified.

Table 13: HIV Cases — by RACE (adults only)

Race	Adults	Pediatric
White	135 (72%)	<3
Black	28 (15%)	
Hispanic	20 (11%)	
Other/Unknown	3 (2%)	
Total	186 (100%)	

Table 15: HIV Cases — by Adult Risk Categories

Risk Factors (adults)	Males	Females	Total
Gay/Bisexual Men	63 (51%)		63 (34%)
Injecting Drug Users	10 (8%)	7 (11%)	17 (9%)
Gay/ Bi Male & IDU	9 (7%)		9 (5%)
Heterosexual Contact	13 (10%)	37 (60%)	50 (27%)
Risk Not Reported/Other	29 (24%)	18 (29%)	47 (25%)
Total	124 (100%)	62 (100%)	186 (100%)

Table 14: Adult HIV Cases — by AGE

Age	Cases (%)	Deaths
13-19	12 (6%)	<3
20-29	53 (29%)	
30-39	69 (37%)	
40-49	35 (19%)	
50+	17 (9%)	
Total	186 (100%)	

There have been <3 HIV pediatric cases reported for Pasco County as of July 1997. Therefore, the specific age group, race or risk cannot be identified at this time.

Hillsborough AIDS Statistics

All Hillsborough County AIDS data is cumulative from 1981 to June 30, 2004
 Source: Florida Department of Health, Bureau of HIV/AIDS



Table 16: **AIDS Cases — by RACE**

Race	Adults	Pediatric	Total
White	2782 (50%)	17 (22%)	2799 (50%)
Black	2009 (36%)	45 (59%)	2054 (36%)
Hispanic	772 (14%)	14 (19%)	786 (14%)
Multi-race	19 (0%)	19 (0%)	19 (0%)
Legacy Asian/Pacific Is.	8 (0%)	8 (0%)	8 (0%)
Am.Indian/AK. Native	5 (0%)	5 (0%)	5 (0%)
Total	5595 (100%)	76 (100%)	5671 (100%)

Table 17: **AIDS Cases — by AGE**

Age	Cases (%)	Deaths
0-4	59 (1%)	32 (42%)
5-12	17 (0%)	
13-19	35 (1%)	
20-29	989 (17%)	
30-39	2446 (43%)	3115 (56%)
40-49	1465 (26%)	
50-59	479 (8%)	
60-64	90 (2%)	
65-69	50 (1%)	
70+	41 (1%)	
Total	5671 (100%)	3147 (55%)

Table 18: **AIDS Cases — by Adult Risk Categories**

Risk Factors (adults)	Males	Females	Total
Gay/Bisexual Men	2701 (61%)		2701 (48%)
Injecting Drug Users	593 (14%)	337 (28%)	930 (17%)
Gay/ Bi Male & IDU	371 (8%)		371 (7%)
Heterosexual Contact	396 (9%)	639 (54%)	1035 (18%)
Transfusion Recipients	27 (1%)	25 (2%)	52 (1%)
Coagulation Disorder	19 (0%)	1 (0%)	20 (0%)
Risk Not Reported	304 (7%)	182 (16%)	486 (9%)
Total	4411 (100%)	1184 (100%)	5595 (100%)

Table 19: **AIDS Cases — by Pediatric Risk Categories**

Risk Factors (peds)	Males	Females	Total
Mother with HIV	32 (82%)	36 (97%)	68 (90%)
Hemophilia	3 (8%)		3 (4%)
Transfusion	4 (10%)		4 (5%)
Risk Not Reported	0 (0%)	1 (3%)	1 (1%)
Total	39 (100%)	37 (100%)	76 (100%)

Hillsborough HIV Statistics

All Hillsborough County HIV data is cumulative from 7/1/97 to June 30, 2004
 Source: Florida Department of Health, Bureau of HIV/AIDS

You can get Hillsborough and other Florida county data on the Florida Department of Health website:
www.doh.state.fl.us
 (once at the site click on "AIDS/HIV")

Table 20: **HIV Cases — by RACE**

Race	Adults	Pediatric	Total
White	707 (36%)	2 (11%)	709 (36%)
Black	958 (49%)	16 (84%)	974 (49%)
Hispanic	291 (15%)	1 (5%)	292 (15%)
Multi-race	7 (0%)	7 (0%)	7 (0%)
Legacy Asian/Pacific Is.	3 (0%)	3 (0%)	3 (0%)
Native Hawaiian/Pacific Is.	1 (0%)	1 (0%)	1 (0%)
Am.Indian/AK. Native	3 (0%)	3 (0%)	3 (0%)
Asian	1 (0%)	1 (0%)	1 (0%)
Total	1971 (100%)	19 (100%)	1990 (100%)

Table 21: **HIV Cases — by AGE**

Age	Cases (%)	Deaths
0-4	12 (1%)	0 (0%)
5-12	7 (0%)	
13-19	72 (4%)	
20-29	527 (27%)	
30-39	716 (36%)	69 (4%)
40-49	447 (22%)	
50-59	151 (8%)	
60-64	34 (2%)	
65-69	14 (1%)	
70+	10 (1%)	
Total	1990 (100%)	69 (3%)

Table 22: **HIV Cases — by Adult Risk Categories**

Risk Factors (adults)	Males	Females	Total
Gay/Bisexual Men	652 (52%)		652 (33%)
Injecting Drug Users	99 (8%)	99 (14%)	198 (10%)
Gay/ Bi Male & IDU	63 (5%)		63 (3%)
Heterosexual Contact	178 (14%)	346 (49%)	524 (27%)
Transfusion Recipients	1 (0%)	1 (0%)	2 (0%)
Coagulation Disorder	2 (0%)		2 (0%)
Risk Not Reported	270 (21%)	260 (37%)	530 (27%)
Total	1265 (100%)	706 (100%)	1971 (100%)

Table 23: **HIV Cases — by Pediatric Risk Categories**

Risk Factors (peds)	Males	Females	Total
Mother with HIV	9 (100%)	9 (90%)	18 (95%)
Risk Not Reported	1 (10%)	1 (5%)	1 (5%)
Total	9 (100%)	10 (100%)	19 (100%)

Florida HIV/AIDS Statistics

Source: Florida Department of Health, Bureau of HIV/AIDS
 HIV/AIDS, STD & TB Monthly Surveillance Report, #238
 If additional state data is needed please go to "www.doh.state.fl.us"

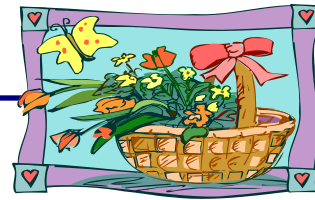


Table 24: **Cumulative HIV Case Counts for Florida**
 (7/1/97-6/30/04)

	HIV	Deaths
Total	33490	872 (3%)
Adult	33174	868 (3%)
Pediatric	316	4 (1%)

Table 26: **Cumulative HIV/AIDS Case Counts in Surrounding Counties**
 (as of 6/30/04)

County	HIV	AIDS
Hillsborough	2768	5661
Pinellas	1591	3853
Polk	666	1576
Sarasota	280	972
Manatee	434	925
Pasco	268	642
Hernando	80	205
Highlands	111	172
Hardee	30	75

Table 27: **Cumulative HIV/AIDS Case Counts in the Top 7 Florida Counties**
 (as of 6/30/04)

County	HIV	AIDS
Miami-Dade	13052	27772
Broward	7372	15512
Palm Beach	3915	9345
Orange	3344	5743
Hillsborough	2768	5661
Duval	2396	4955
Pinellas	1591	3853

Table 25: **Cumulative AIDS Case Counts for Florida**
 (through 6/30/04)

	AIDS	Deaths
Total	98154	53600 (55%)
Adult	96663	52764 (55%)
Pediatric	1491	836 (56%)

United States HIV/AIDS Statistics

Adults & Children estimated to be **living** with HIV/AIDS in U.S. in 2002: 980,000
 Estimated number of adults & children **newly** infected with HIV in U.S. during 2002: 45,000

Beth Gustafson is responsible for compiling and editing the HIV/AIDS Surveillance Statistics for the Pinellas and Pasco County Health Departments on a quarterly basis. For further information regarding statistics, or questions regarding HIV or AIDS reporting, please contact Beth at (727) 824-6903

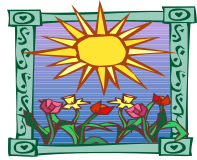


Table 28: **Cumulative HIV/AIDS Case Counts for U.S.**
 (as of 6/30/04)

	HIV*	AIDS	% AIDS Deaths
Total	232,264	922,835	58%
Adult	227,477	913,433	58%
Pediatric	4,787	9,402	55%

(Source: Florida HIV/AIDS, STD & TB Monthly Surveillance Report, #238)

Table 31: **Cumulative AIDS Cases of 10 Leading U.S. States**
 (as of 7/31/03)

1. New York	165,378
2. California	135,493
3. Florida	97,768
4. Texas	64,737
5. New Jersey	47,491
6. Illinois	30,991
7. Pennsylvania	30,700
8. Georgia	28,809
9. Maryland	27,608
10. Massachusetts	18,760

(Source: Florida HIV/AIDS, STD & TB Monthly Surveillance Report, #238)

Table 29: **Cumulative HIV* Cases of 5 Leading U.S. States**
 (as of 6/30/04)

1. New York (12/00)	37675	(16%)
2. Florida (7/97)	33261	(14%)
3. Texas (2/94)	19911	(9%)
4. New Jersey (1/92)	17507	(8%)
5. North Carolina (2/90)	13119	(6%)

(Source: Florida HIV/AIDS, STD & TB Monthly Surveillance Report, #238)

* Data only from those states where HIV is reportable & includes only persons reported with HIV infection who have not developed AIDS

Table 30: **Cumulative AIDS Cases of 20 Leading U.S. Cities**
 (as of 12/31/02)

1. New York City	131,868	11. San Juan, PR	17,069
2. Los Angeles	45,036	12. Baltimore	17,032
3. San Francisco	28,981	13. Boston	15,630
4. Washington DC	26,657	14. Ft Lauderdale	14,319
5. Miami	26,493	15. Dallas	13,862
6. Chicago	24,550	16. San Diego	11,526
7. Philadelphia	21,759	17. Tampa-St Pete	9,503
8. Houston	20,877	18. Detroit	8,766
9. Newark	18,356	19. West Palm Beach	8,678
10. Atlanta	18,153	20. Oakland	8,633

(Source: Centers for Disease Control, HIV/AIDS Surveillance Report, Vol. 14)

Here are some useful Web links/sites for HIV/AIDS information:

World HIV/AIDS Statistics

From W.H.O. (www.who.org) & UNAIDS (www.unaids.org):
Reported World AIDS Cases as of 11/01: 2,784,317
Estimated living World HIV/AIDS Cases as of 2003: 40 million
Estimated new HIV infections in World in 2003: 5 million
Estimated World deaths due to HIV/AIDS in 2003: 3 million
Estimated Cumulative number of deaths in World due to HIV/AIDS: 22 million



- <http://www.doh.state.fl.us>
- <http://www.cdc.gov>
- <http://www.who.int>
- <http://www.paho.org/english/aid/aidstd.htm>
- <http://www.iapac.org>
- <http://www.flairs.org/tcrs/aidstline.htm>
- <http://hivinsite.ucsf.edu>
- <http://www.hivatis.org/trtgdlns.html>
- Florida HIV/AIDS statistics
- Centers for Disease Control
- World Health Organization
- PAHO: AIDS site
- Int'l Assoc of Physicians in AIDS care
- Florida AIDS Hotline site
- HIV/AIDS InSite Information
- HIV/AIDS treatment site



HIV/AIDS Surveillance Office
Pinellas County Health Department
205 Dr. M.L. King Street North
St Petersburg, FL 33701

Keeping up with all the HIV/AIDS Surveillance Staff changes?!

The Pinellas County HIV/AIDS Surveillance office has seen a lot of changes in staff personnel over the past few months ... so we wanted to make sure all of you were aware of these changes.

First of all, as you may have already detected from the name on the newsletter or from calls to the surveillance office, the HIV/AIDS Surveillance program manager recently changed her last name. **As of June 2004 Ms. Beth Gustafson officially became Ms. Beth Sudduth.** We hope that you will update your mailing and/or email address books with the new name so that you will know who to call when you have an HIV/AIDS case to report!

Also, our long time data entry operator (i.e. Senior Word Processing Systems Operator), **Ms. Dolores (De) Wengrzyn**, decided it was time to leave our program a few months ago (after spending 8+ years with us) and learn something new. She moved over to the STD program in April 2004 ... but she still manages to stop by and say "hi" almost every day. We are currently in the process of finding a replacement for her position. Her shoes were/are hard to fill!

Last, but not least, we also said goodbye to a few of our part-time administrative staff (**Alicia Bahadur, Warren Oliver Jr., and Jessica Cowley**) as they all moved on to bigger and brighter places ... either more time at graduate school or other jobs. In their place we hired another part-time administrative assistant, **Ms. Liza Ryan**, who joined us May 2004. Please welcome her to our staff and feel free to talk with her when you call our office.

Florida law requires cases of AIDS to be reported by anyone who diagnoses or treats a person with AIDS, with a \$500 fine per case for failure to report. **NOTE: A person who tests positive for Human Immunodeficiency Virus (HIV) on or after July 1, 1997 is reportable. Confidentiality is guaranteed. Please send your completed HIV/AIDS case report in an envelope marked "CONFIDENTIAL" to:**

BETH SUDDUTH, MPH
PINELLAS COUNTY HEALTH DEPARTMENT
205 DR. M.L. KING STREET NORTH
ST PETERSBURG, FL 33701
(727) 824-6903 ; SUNCOM 513-1068
FAX: (727) 893-1681
EMAIL: BETH_SUDDUTH@DOH.STATE.FL.US

If you need reporting forms, would like to have a brief HIV/AIDS Surveillance In-Service for your staff in your office, or would like to have your HIV/AIDS cases reviewed in your office, please call the above number and speak to Beth Sudduth, Danielle Kahl or Liza Ryan.

