



Jeb Bush * Governor
 John O. Agwunobi, MD, MBA * Secretary of Health
 John P. Heilman, MD, MPH * Pinellas County Health Department Director
 Lisa Cohen * Pinellas & Pasco Counties HIV/AIDS Program Coordinator
 Beth Gustafson, MPH * Editor of Pinellas County HIV/AIDS Surveillance Newsletter

Volume 13, Issue 2

October 7, 2003



PINELLAS COUNTY HEALTH DEPARTMENT
 205 DR. M.L. KING ST NO * ST PETERSBURG, FL 33701 * 727-824-6900

HIV/AIDS Surveillance Quarterly Statistics Pinellas and Pasco Counties (Area 5) July 2003

CDC Unveils Data System for HIV Cases

Associated Press (07/27/03): Daniel Yee. The government has unveiled a new surveillance system to track HIV infections. CDC researchers said the new system uses anonymous data from 35 sites around the country to create a nationally representative snapshot of new HIV infections. Federal health officials will use two antibody tests that indicate whether a patient has been infected within the last six months. "The new system applies this technology and allows us to distinguish a new infection from an old infection," said Dr. Ronald Valdiserri, deputy director of CDC's National Center for HIV, STD and TB Prevention. "It gets at the question everyone wants answered, which is how many new cases of HIV are occurring."

The system, which CDC plans to have in place by 2004, will provide statistics from areas representing 93 percent of the country's HIV population. CDC officials say the new set of antibody tests is about 95 percent accurate. "It relies on the fact human beings go through a fairly predictable process of antibody development" after HIV infection, Valdiserri said. "Over time, the longer you're infected, the more antibodies you're able to produce."

By identifying recent HIV infection trends, health officials can shift resources to tackle the new cases. The government's goal is to cut new HIV cases - currently about 40,000 a year - in half.

Some advocates are concerned about how the data will be recorded and whether infected people will retain their anonymity. "No doubt it will provide a more accurate picture of the epidemic, but it's coming full-scale against the debate over how to best do it and protect" patients' privacy, said David Harvey of Washington-based AIDS Alliance for Children, Youth and Families.

HIV-positive Patients Receive Limited Transmission Prevention Advice from Clinics - (By Megan Rauscher)

07/30/03: Healthcare providers continue to be reluctant to ask their HIV-infected patients about specific risk behaviors, according to results of a study reported Monday during the opening day of the 2003 National HIV Prevention Conference in Atlanta, GA.

During a press briefing, Dr. Stephen F. Morin of the University of California, San Francisco, said: "Effective prevention with people living with HIV requires both providers and their patients to overcome their discomfort and unease in confronting HIV sexual risk behavior. For those diagnosed with HIV, discussion of how to protect their partners is an essential part of routine healthcare."

Over a 2-year period, Dr. Morin and colleagues conducted exit interviews with more than 600 HIV-positive patients leaving 16 federally funded clinics. They found that over two-thirds were sexually active and, among this group, 20% indicated that they were concerned that they may have infected someone with HIV in the last 6 months.

The study also revealed "considerable" missed opportunities for HIV prevention, Dr. Morin said. For example, 25% of those interviewed reported that someone at clinic spoke to them in general terms about safe sex, but only 6% had any discussion of specific sexual activities.

Based on interviews with clinic administrators and primary care physicians, the prime barriers to effective counseling include time constraints and lack of training and money earmarked specifically for "prevention with positives programs," Dr. Morin said.

In three participating clinics that had written procedures for HIV testing and counseling, HIV-infected patients were twice as likely to receive routine HIV prevention counseling as clinics without these written procedures.

"With proper training and implementation of clinic procedures, there is considerable opportunity for HIV prevention in clinical care settings," he said.

Inside this issue:	
Pinellas HIV & AIDS statistics	2
Pasco HIV & AIDS statistics	3
Hillsborough HIV & AIDS statistics	4
Florida HIV & AIDS statistics	5
U.S. HIV & AIDS statistics	5
World HIV & AIDS statistics	5
HIV/AIDS Health Department Contact	6

Special points of interest:

- A very special **CONGRATULATIONS (!!!)** goes to Mr. Raymond Sanderlin on his promotion to STD supervisor at the St. Petersburg County Health Department health center. He will be leaving his position of NIR Coordinator very soon but he has vowed to help us continue the quest in solving HIV risks by stressing the importance of obtaining risks through his new position working with the STD staff. We hope to very soon have a new NIR Coordinator to welcome to you and our staff.
- Please call the HIV/AIDS Surveillance office at 727-824-6903 if you have an HIV or AIDS case to report or if you need specific HIV/AIDS statistical information. For Pasco County cases please call Michael Wydotis at 727-869-3900 (x173).**



Pinellas County AIDS Statistics

All Pinellas County AIDS data is cumulative from 1981 to August 31, 2003
 Source: Pinellas County Health Department, HIV/AIDS Surveillance

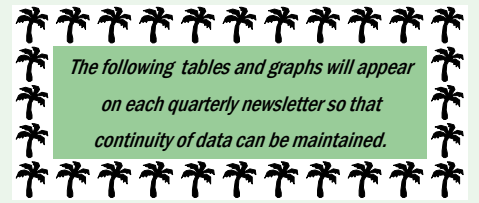


Table 1: AIDS Cases — by RACE

Race	Adults	Pediatric	Total
White	2574 (70%)	12 (50%)	2586 (70%)
Black	911 (25%)	11 (46%)	922 (25%)
Hispanic	162 (5%)	1 (4%)	163 (5%)
Legacy Asian/Pacific Is.	13 (0%)		13 (0%)
Am.Indian/AK. Native	8 (0%)		8 (0%)
Multi-race	6 (0%)		6 (0%)
Unknown	0 (0%)		0 (0%)
Total	3674 (100%)	24 (100%)	3698 (100%)

Table 3: AIDS Cases — by Adult Risk Categories

Risk Factors (adults)	Males	Females	Total
Gay/Bisexual Men	2133 (68%)		2133 (58%)
Injecting Drug Users	392 (13%)	163 (30%)	555 (15%)
Gay/ Bi Male & IDU	246 (8%)		246 (7%)
Heterosexual Contact	175 (6%)	294 (54%)	469 (13%)
Transfusion Recipients	31 (1%)	25 (4%)	56 (2%)
Coagulation Disorder	14 (0%)		14 (0%)
Risk Not Reported	135 (4%)	66 (12%)	201 (5%)
Total	3126 (100%)	548 (100%)	3674 (100%)

Table 2: AIDS Cases — by AGE

Age	Cases (%)	Deaths
0-4	18 (0%)	15 (63%)
5-12	6 (0%)	
13-19	22 (1%)	
20-29	587 (16%)	
30-39	1626 (44%)	2113 (58%)
40-49	1004 (27%)	
50+	435 (12%)	
Total	3698 (100%)	2128 (58%)

Table 4: AIDS Cases — by Pediatric Risk Categories

Risk Factors (peds)	Males	Females	Total
Mother with HIV	9 (75%)	11 (92%)	20 (84%)
Hemophilia	2 (17%)		2 (8%)
Transfusion	1 (8%)		1 (4%)
Risk Not Reported	0 (0%)	1 (8%)	1 (4%)
Total	12 (100%)	12 (100%)	24 (100%)

Pinellas County HIV Statistics

All Pinellas County HIV data is cumulative from 7/1/97 to August 31, 2003
 Source: Pinellas County Health Department, HIV/AIDS Surveillance

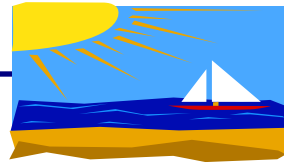


Table 5: HIV Cases — by RACE

Race	Adults	Pediatric	Total
White	534 (55%)	3 (43%)	537 (55%)
Black	364 (37%)	3 (43%)	367 (37%)
Hispanic	57 (6%)	1 (14%)	58 (6%)
Asian	3 (0%)		3 (0%)
Legacy Asian/Pacific Is.	5 (1%)		5 (1%)
Am.Indian/AK. Native	5 (0%)		5 (0%)
Multi-race	7 (1%)		7 (1%)
Unknown	0 (0%)		0 (0%)
Total	975 (100%)	7 (100%)	982 (100%)

Table 7: HIV Cases — by Adult Risk Categories

Risk Factors (adults)	Males	Females	Total
Gay/Bisexual Men	407 (59%)		407 (42%)
Injecting Drug Users	66 (10%)	61 (21%)	127 (13%)
Gay/ Bi Male & IDU	42 (6%)		42 (4%)
Heterosexual Contact	59 (9%)	138 (48%)	197 (20%)
Transfusion Recipients	3 (0%)	2 (1%)	5 (1%)
Coagulation Disorder	0 (0%)		0 (0%)
Risk Not Reported	109 (16%)	88 (30%)	197 (20%)
Total	686 (100%)	289 (100%)	975 (100%)

Table 6: HIV Cases — by AGE

Age	Cases (%)	Deaths
0-4	4 (0%)	0 (0%)
5-12	3 (0%)	
13-19	40 (4%)	
20-29	255 (26%)	
30-39	385 (39%)	23 (2%)
40-49	213 (22%)	
50+	82 (9%)	
Total	982 (100%)	23 (2%)

Table 8: HIV Cases — by Pediatric Risk Categories

Risk Factors (peds)	Males	Females	Total
Mother with HIV	2 (100%)	3 (60%)	5 (71%)
Risk Not Reported		2 (40%)	2 (29%)
Total	2 (100%)	5 (100%)	7 (100%)

Pasco County AIDS Statistics

All Pasco County AIDS data is cumulative from 1981 to August 31, 2003
 Source: Pinellas County Health Department, HIV/AIDS Surveillance



Table 9: **AIDS Cases — by RACE**

Race	Adults	Pediatric
White	513 (83%)	
Black	62 (10%)	3
Hispanic	40 (6%)	
Other/Unknown	4 (1%)	
Total	619 (100%)	3 (100%)

Table 11: **AIDS Cases — by Adult Risk Categories**

Risk Factors (adults)	Males	Females	Total
Gay/Bisexual Men	279 (54%)		279 (45%)
Injecting Drug Users	70 (14%)	32 (30%)	102 (17%)
Gay/ Bi Male & IDU	54 (10%)		54 (9%)
Heterosexual Contact	46 (9%)	61 (56%)	107 (17%)
Transfusion Recipients	13 (3%)	3 (3%)	16 (3%)
Coagulation Disorder	3 (1%)		3 (0%)
Risk Not Reported	46 (9%)	12 (11%)	58 (9%)
Total	511 (100%)	108 (100%)	619 (100%)

Table 10: **AIDS Cases — by AGE**

Age	Cases (%)	Deaths
0-12	3 (0%)	
13-19	4 (1%)	
20-29	89 (14%)	
30-39	275 (44%)	
40-49	168 (27%)	
50+	83 (14%)	
Total	622 (100%)	337 (54%)

Table 12: **AIDS Cases — by Pediatric Risk Categories**

Risk Factors (peds)	Total
Mother with HIV	3 (100%)
Risk Not Reported	
Total	3 (100%)

Pasco County HIV Statistics

All Pasco County HIV data is cumulative from 7/1/97 to August 31, 2003
 Source: Pinellas County Health Department, HIV/AIDS Surveillance



Due to the fact that some of the cell sizes for Pasco County were <3, some of the data has not been completely stratified.

Table 13: **HIV Cases — by RACE (adults only)**

Race	Adults
White	114 (74%)
Black	25 (16%)
Hispanic	15 (10%)
Other/Unknown	1 (0%)
Total	155 (100%)

Table 15: **HIV Cases — by Adult Risk Categories**

Risk Factors (adults)	Males	Females	Total
Gay/Bisexual Men	49 (46%)		49 (32%)
Injecting Drug Users	11 (10%)	8 (17%)	19 (12%)
Gay/ Bi Male & IDU	9 (9%)		9 (6%)
Heterosexual Contact	11 (10%)	29 (60%)	40 (26%)
Risk Not Reported/Other	27 (25%)	11 (23%)	38 (24%)
Total	107 (100%)	48 (100%)	155 (100%)

Table 14: **HIV Cases — by AGE**

Age	Cases (%)	Deaths
0-19	10 (7%)	
20-29	42 (27%)	
30-39	62 (40%)	
40-49	25 (16%)	
50+	16 (10%)	
Total	155 (100%)	0 (0%)

There have been no HIV pediatric cases reported for Pasco County as of July 1997.

Hillsborough AIDS Statistics

All Hillsborough County AIDS data is cumulative from 1981 to August 31, 2003
Source: Florida Department of Health, Bureau of HIV/AIDS



Table 16: **AIDS Cases — by RACE**

Race	Adults	Pediatric	Total
White	2675 (51%)	17 (23%)	2692 (51%)
Black	1850 (35%)	45 (60%)	1895 (36%)
Hispanic	703 (14%)	13 (17%)	716 (13%)
Legacy Asian/Pacific Is.	9 (0%)	9 (0%)	9 (0%)
Am.Indian/AK. Native	5 (0%)	5 (0%)	5 (0%)
Multi-race	5 (0%)	5 (0%)	5 (0%)
Total	5247 (100%)	75 (100%)	5322 (100%)



Table 17: **AIDS Cases — by AGE**

Age	Cases (%)	Deaths
0-4	58 (1%)	31 (41%)
5-12	17 (0%)	
13-19	33 (1%)	
20-29	944 (18%)	
30-39	2325 (43%)	2979 (57%)
40-49	1342 (25%)	
50-59	431 (8%)	
60-64	89 (2%)	
65-69	43 (1%)	
70+	40 (1%)	
Total	5322 (100%)	3010 (57%)



Table 18: **AIDS Cases — by Adult Risk Categories**

Risk Factors (adults)	Males	Females	Total
Gay/Bisexual Men	2564 (61%)		2564 (49%)
Injecting Drug Users	572 (14%)	320 (30%)	892 (17%)
Gay/ Bi Male & IDU	356 (9%)		356 (7%)
Heterosexual Contact	360 (9%)	557 (52%)	917 (17%)
Transfusion Recipients	27 (1%)	25 (2%)	52 (1%)
Coagulation Disorder	19 (0%)	1 (0%)	20 (0%)
Risk Not Reported	275 (6%)	171 (16%)	446 (9%)
Total	4173 (100%)	1074 (100%)	5247 (100%)

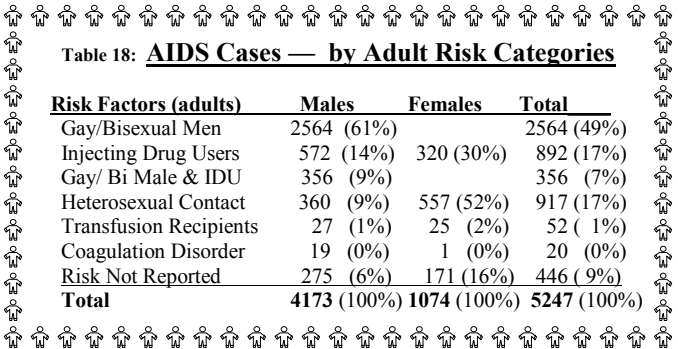
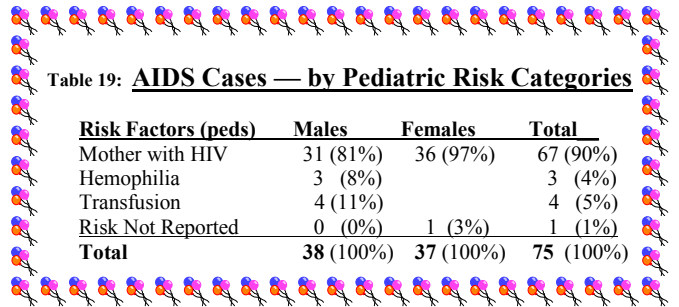


Table 19: **AIDS Cases — by Pediatric Risk Categories**

Risk Factors (peds)	Males	Females	Total
Mother with HIV	31 (81%)	36 (97%)	67 (90%)
Hemophilia	3 (8%)		3 (4%)
Transfusion	4 (11%)		4 (5%)
Risk Not Reported	0 (0%)	1 (3%)	1 (1%)
Total	38 (100%)	37 (100%)	75 (100%)



Hillsborough HIV Statistics

All Hillsborough County HIV data is cumulative from 7/1/97 to August 31, 2003
Source: Florida Department of Health, Bureau of HIV/AIDS

You can get Hillsborough and other Florida county data on the Florida Department of Health website:

www.doh.state.fl.us

(once at the site click on "AIDS/HIV")



Table 20: **HIV Cases — by RACE**

Race	Adults	Pediatric	Total
White	681 (36%)	2 (12%)	683 (36%)
Black	939 (49%)	14 (82%)	953 (51%)
Hispanic	275 (15%)	1 (6%)	276 (13%)
Legacy Asian/Pacific Is.	4 (0%)	4 (0%)	4 (0%)
Native Hawaiian/Pacific Is.	1 (0%)	1 (0%)	1 (0%)
Am.Indian/AK. Native	1 (0%)	1 (0%)	1 (0%)
Multi-race	4 (0%)	4 (0%)	4 (0%)
Total	1905 (100%)	17 (100%)	1922 (100%)



Table 21: **HIV Cases — by AGE**

Age	Cases (%)	Deaths
0-4	10 (1%)	0 (0%)
5-12	7 (0%)	
13-19	62 (3%)	
20-29	488 (25%)	
30-39	719 (37%)	77 (4%)
40-49	454 (24%)	
50-59	129 (7%)	
60-64	26 (1%)	
65-69	16 (1%)	
70+	11 (1%)	
Total	1922 (100%)	77 (4%)



Table 22: **HIV Cases — by Adult Risk Categories**

Risk Factors (adults)	Males	Females	Total
Gay/Bisexual Men	616 (51%)		616 (32%)
Injecting Drug Users	93 (8%)	101 (14%)	194 (10%)
Gay/ Bi Male & IDU	56 (5%)		56 (3%)
Heterosexual Contact	160 (13%)	322 (46%)	482 (25%)
Transfusion Recipients	1 (0%)	1 (0%)	2 (0%)
Coagulation Disorder	2 (0%)		2 (0%)
Risk Not Reported	276 (23%)	277 (40%)	553 (29%)
Total	1204 (100%)	701 (100%)	1905 (100%)

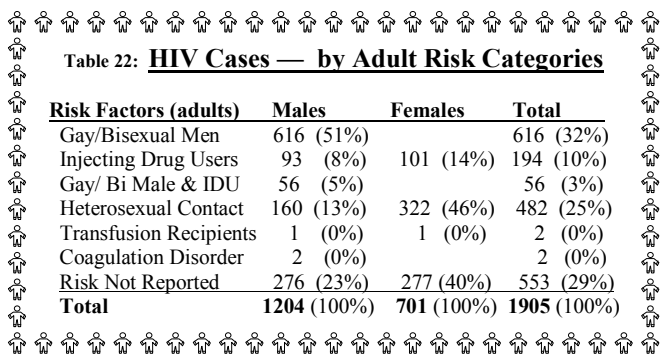
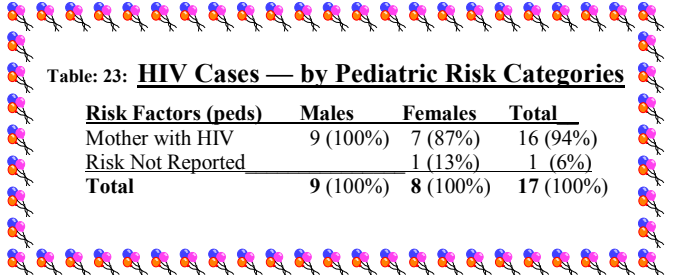


Table 23: **HIV Cases — by Pediatric Risk Categories**

Risk Factors (peds)	Males	Females	Total
Mother with HIV	9 (100%)	7 (87%)	16 (94%)
Risk Not Reported	1 (13%)	1 (6%)	1 (6%)
Total	9 (100%)	8 (100%)	17 (100%)



Florida HIV/AIDS Statistics

Source: Florida Department of Health, Bureau of HIV/AIDS
 HIV/AIDS, STD & TB Monthly Surveillance Report, #227
 If additional state data is needed please go to "www.doh.state.fl.us"

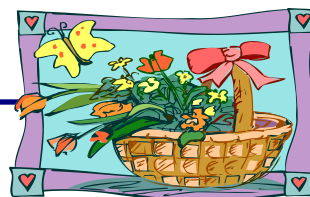


Table 24: **Cumulative HIV Case Counts for Florida**
 (7/1/97-7/31/03)

	HIV	Deaths
Total	30807	732 (2%)
Adult	30521	728 (2%)
Pediatric	286	4 (1%)

Table 25: **Cumulative AIDS Case Counts for Florida**
 (through 7/31/03)

	AIDS	Deaths
Total	93065	50974 (55%)
Adult	91601	50154 (55%)
Pediatric	1464	820 (56%)

Table 26: **Cumulative HIV/AIDS Case Counts in Surrounding Counties**
 (as of 7/31/03)

County	HIV	AIDS
Hillsborough	2443	5260
Pinellas	1356	3691
Polk	590	1475
Sarasota	236	905
Manatee	382	875
Pasco	219	601
Hernando	74	192
Highlands	103	163
Hardee	22	66

Table 27: **Cumulative HIV/AIDS Case Counts in the Top 7 Florida Counties**
 (as of 7/31/03)

County	HIV	AIDS
Miami-Dade	11517	26649
Broward	6422	14631
Palm Beach	3476	8881
Orange	2987	5389
Hillsborough	2443	5260
Duval	2073	4682
Pinellas	1356	3691

United States HIV/AIDS Statistics

Adults & Children estimated to be **living** with HIV/AIDS in U.S. in 2002: 980,000
 Estimated number of adults & children **newly** infected with HIV in U.S. during 2002: 45,000

Table 28: **Cumulative HIV/AIDS Case Counts for U.S.**
 (as of 7/31/03)

	HIV*	AIDS	% AIDS Deaths
Total	211432	882855	56%
Adult	206909	873556	56%
Pediatric	4523	9299	57%

(Source: Florida HIV/AIDS, STD & TB Monthly Surveillance Report, #227)

Beth Gustafson is responsible for compiling and editing the HIV/AIDS Surveillance Statistics for the Pinellas and Pasco County Health Departments on a quarterly basis. For further information regarding statistics, or questions regarding HIV or AIDS reporting, please contact Beth at (727) 824-6903



Table 31: **Cumulative AIDS Cases of 10 Leading U.S. States**
 (as of 7/31/03)

1. New York 159119
2. California 130912
3. Florida 92809
4. Texas 61283
5. New Jersey 46133
6. Illinois 29581
7. Pennsylvania 29110
8. Georgia 27049
9. Maryland 26219
10. Massachusetts 18141

(Source: Florida HIV/AIDS, STD & TB Monthly Surveillance Report, #227)

Here are some useful Web links/sites for HIV/AIDS information:

Table 29: **Cumulative HIV* Cases of 5 Leading U.S. States**
 (as of 7/31/03)

1. New York (12/00)	33262	(15%)
2. Florida (7/97)	30398	(15%)
3. Texas (2/94)	16729	(8%)
4. New Jersey (1/92)	16538	(8%)
5. North Carolina (2/90)	12160	(6%)

(Source: Florida HIV/AIDS, STD & TB Monthly Surveillance Report, #227)

* Data only from those states where HIV is reportable & includes only persons reported with HIV infection who have not developed AIDS

Table 30: **Cumulative AIDS Cases of 20 Leading U.S. Cities**
 (as of 12/31/01)

1. New York City	126237	11. San Juan, PR	16372
2. Los Angeles	43488	12. Baltimore	15792
3. San Francisco	28438	13. Boston	14945
4. Miami	25357	14. Ft Lauderdale	13594
5. Washington DC	24844	15. Dallas	13119
6. Chicago	22703	16. San Diego	11070
7. Philadelphia	20369	17. Tampa-St Pete	9006
8. Houston	19898	18. Oakland	8347
9. Newark	17796	19. Detroit	8196
10. Atlanta	17157	20. West Palm Beach	8118

(Source: Centers for Disease Control, HIV/AIDS Surveillance Report, Vol. 13, No.2)

World HIV/AIDS Statistics

From W.H.O. (www.who.org) & UNAIDS (www.unaids.org):

Reported World AIDS Cases as of 11/01: **2,784,317**

Estimated living World HIV/AIDS Cases as of 2002: **42 million**

Estimated new HIV infections in World in 2002: **5 million**

Estimated World deaths due to HIV/AIDS in 2002: **3.1 million**

Estimated Cumulative number of deaths in World due to HIV/AIDS: **21.8 million**



<http://www.doh.state.fl.us>
<http://www.cdc.gov>
<http://www.who.int>
<http://www.paho.org/english/aid/aidstd.htm>
<http://www.iapac.org>
<http://www.flairs.org/tcrs/aidstline.htm>
<http://hivinsite.ucsf.edu>
<http://www.hivatis.org/trtgdlns.html>

Florida HIV/AIDS statistics
 Centers for Disease Control
 World Health Organization
 PAHO: AIDS site
 Int'l Assoc of Physicians in AIDS care
 Florida AIDS Hotline site
 HIV/AIDS InSite Information
 HIV/AIDS treatment site



HIV/AIDS Surveillance Office
 Pinellas County Health Department
 205 Dr. M.L. King Street North
 St Petersburg, FL 33701

African-American, Hispanic Men Who Have Sex With Men Spreading HIV To Minority Heterosexual Women

Access this story and related links online: http://www.kaisernetwork.org/daily_reports/rep_index.cfm?DR_ID=18564

Although HIV-positive African-American and Hispanic men are more likely than their white counterparts to have sex with both men and women, African-American and Hispanic women are less likely than white women to know that their partners have sex with both men and women, according to results from a study that is scheduled to be published later this year, the Detroit News reports. The study, conducted by the Michigan Department of Community Health and the CDC, used data from state health departments in Arizona, Colorado, Connecticut, Delaware, Florida, Georgia, New Jersey, New Mexico, South Carolina and Washington, as well as data from the Los Angeles County Health Department. According to the study, 34% of HIV-positive African-American men said that they had engaged in sex with both women and men, compared with 26% of HIV-positive Hispanic men and 13% of HIV-positive white men. However, among HIV-positive women, 14% of white women said that they knew their partners had also had sex with men, compared with 6% of African-American and Hispanic women. The disparity in awareness is partly responsible for the rapid spread of HIV in minority communities, according to the AIDS CARE study. In 2001, 12% of the U.S. population was African American, but African Americans represented 50% of the new HIV cases reported in that year, according to the News. In addition, HIV/AIDS is the leading cause of death for African-American women ages 25 to 34, and the disease is among the top three leading causes of death for African-American women ages 35 to 44 and black men ages 25 to 54, according to the News.

Florida law requires cases of AIDS to be reported by anyone who diagnoses or treats a person with AIDS, with a \$500 fine per case for failure to report. NOTE: A person who tests positive for Human Immunodeficiency Virus (HIV) on or after July 1, 1997 is reportable. Confidentiality is guaranteed. Please send your completed HIV/AIDS case report in an envelope marked "CONFIDENTIAL" to:

BETH GUSTAFSON, MPH
PINELLAS COUNTY HEALTH DEPARTMENT
 205 DR. M.L. KING STREET NORTH
 ST PETERSBURG, FL 33701
 (727) 824-6903 ; SUNCOM 513-1068
 FAX: (727) 893-1681
 EMAIL: BETH_GUSTAFSON@DOH.STATE.FL.US

If you need reporting forms, would like to have a brief HIV/AIDS Surveillance In-Service for your staff in your office, or would like to have your HIV/AIDS cases reviewed in your office, please call the above number and speak to Beth Gustafson, Alicia Bahadur, or De Wengrzyn.

