

Jeb Bush \* Governor  
 John O. Agwunobi, MD, MBA \* Secretary of Health  
 John P. Heilman, MD, MPH \* Pinellas County Health Department Director  
 Lisa Cohen \* Pinellas & Pasco Counties HIV/AIDS Program Coordinator  
 Beth Gustafson, MPH \* Editor of Pinellas County HIV/AIDS Surveillance Newsletter



<http://www.pinellashealth.com>



Have you ever wanted to find out more about the services available at your local county health department but didn't get a chance to call them during regular working hours?

Have you ever wanted to contact the health department but you were not sure who would be the best person to talk with?

Now you will be able to have another resource at your fingertips. The Pinellas County Health Department will be launching a new website on June 3rd, 2002 that will contain pertinent information on all the services/programs available to the public at local health department sites located across Pinellas County. The new website will be located at "http://www.pinellashealth.com". The following departments have information on the website about the services that they provide to the public:

- \* dental health
- \* disease control division
  - Epidemiology
  - Hepatitis Program
  - HIV/AIDS Program
  - Nursing home/ALF
  - Public Health Nursing
  - Refugee Health
  - Sexually Transmitted Diseases (STD)
  - TB Control Program
- \* community health
- \* environmental engineering
- \* environmental health
- \* family health
- \* WIC nutrition

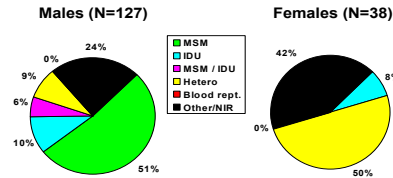
The HIV/AIDS Surveillance office has provided a website area that is user friendly and very informational. You can read about why surveillance information is important and why we need cooperation and participation from health care providers in order to provide useful information to our local area HIV/AIDS planners and providers. The website also instructs health care providers on "How to Report HIV/AIDS Cases" to the HIV/AIDS surveillance office and it includes all the necessary forms that need to be printed out, filled in, and sent in to the surveillance office. In addition, there are useful HIV/AIDS links and statistics that can assist the health care provider with reports and/or presentations. We encourage you to check the website out and please provide feedback (by calling 727-824-6903) so that we might be able to better serve your needs.

\*\*\*\*\*

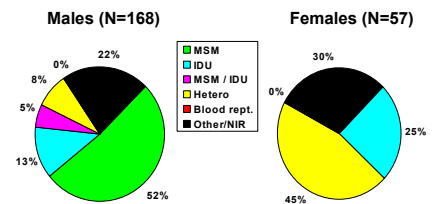
**Risk Update for Pinellas County:**  
 (A Comparison from Year 2000 to 2001)

Approximately one year ago, in the April 2001 newsletter, the surveillance office had provided an overview of the reasons for reporting HIV and AIDS cases to your local health department. One of the many important reasons for reporting HIV/AIDS cases is the need to know how the HIV virus is being transmitted in our local areas so that HIV/AIDS program planners can plan ahead and know what risk groups to target for future educational events

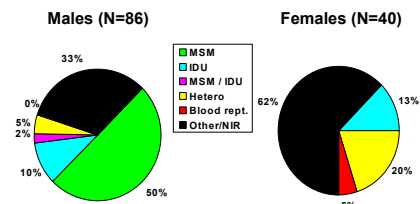
Adult AIDS Cases in Pinellas County  
 By Mode of Exposure and Sex, Diagnosed in 2000



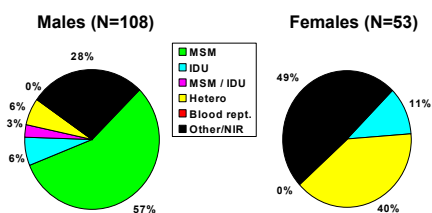
Adult AIDS Cases in Pinellas County  
 By Mode of Exposure and Sex, Diagnosed in 2001



Adult HIV Cases in Pinellas County  
 By Mode of Exposure and Sex, Diagnosed in 2000



Adult HIV Cases in Pinellas County  
 By Mode of Exposure and Sex, Diagnosed in 2001



and interventions. It is the main focus of the HIV/AIDS program to help prevent the spread of the HIV virus so that lives can be saved and local resources can be utilized to help those who already are infected and need financial and patient care assistance. Six months ago the Area 5 (Pinellas and Pasco County) HIV/AIDS surveillance office hired an NIR (i.e. Non-Identified Risk) Coordinator, Mr. Raymond Sanderlin, to investigate the NIRs reported in Area 5 and assist in solving those NIRs. In an effort to solve unreported risks he has already been successful in contacting several area health care providers regarding risk information forms and permission to follow-up on patients for interviewing purposes. The above graphs show the difference in NIR rates (in black) for HIV

PINELLAS COUNTY HEALTH DEPARTMENT  
 500 7TH AVENUE SOUTH \* ST PETERSBURG, FL 33701 \* (727) 824-6900

**HIV/AIDS Surveillance Quarterly Statistics**  
 Pinellas and Pasco Counties (Area 5)  
 April 2002

Inside this issue:	
Pinellas HIV & AIDS statistics	2
Pasco HIV & AIDS statistics	3
Hillsborough HIV & AIDS statistics	4
Florida HIV & AIDS statistics	5
U.S. HIV & AIDS statistics	5
World HIV & AIDS statistics	5
HIV/AIDS Health Department Contact	6

**Special points of interest:**

- **National HIV Testing Day is on June 27th, 2002. Mark your calendars!**  
 In Pinellas County please call 727-824-6902 or 824-6911 to find out locations for free HIV testing.  
 In Pasco County free HIV and syphilis testing will be offered at the **New Port Richey CHD: 11-6PM**
- **Call the HIV/AIDS surveillance office at 727-824-6903 if you have an HIV or AIDS case to report or if you need specific HIV/AIDS statistical information. De Wengrzyn, Ray Sanderlin, Erica Amato, Beale Morgan or myself are here to assist you with reporting and/or statistics you might need! If you're a health care provider in Pasco County and need to report an HIV/AIDS case please call Michael Wydotis at 727-869-3900 (x173).**



# Pinellas County AIDS Statistics

All Pinellas County AIDS data is cumulative from 1981 to May 1, 2002  
 Source: Pinellas County Health Department, HIV/AIDS Surveillance

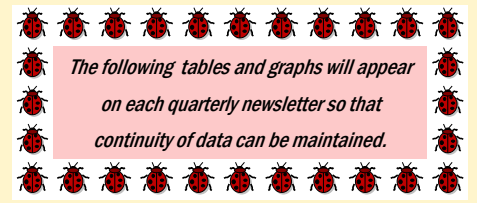


Table 1: **AIDS Cases — by RACE**

Race	Adults	Pediatric	Total
White	2457 (71%)	12 (50%)	2469 (71%)
Black	835 (24%)	11 (45%)	846 (24%)
Hispanic	143 (4%)	1 (5%)	144 (4%)
Asian/Pacific Is.	11 (0%)		11 (0%)
Am.Indian/AK. Native	7 (0%)		7 (0%)
Unknown	0 (0%)		0 (0%)
<b>Total</b>	<b>3453 (100%)</b>	<b>24 (100%)</b>	<b>3477 (100%)</b>

Table 3: **AIDS Cases — by Adult Risk Categories**

Risk Factors (adults)	Males	Females	Total
Gay/Bisexual Men	2003 (68%)		2003 (58%)
Injecting Drug Users	366 (12%)	136 (27%)	502 (15%)
Gay/ Bi Male & IDU	209 (7%)		209 (6%)
Heterosexual Contact	163 (6%)	253 (50%)	416 (12%)
Transfusion Recipients	33 (1%)	24 (5%)	57 (2%)
Coagulation Disorder	14 (0%)		14 (0%)
Risk Not Reported	163 (6%)	89 (18%)	252 (7%)
<b>Total</b>	<b>2951 (100%)</b>	<b>502 (100%)</b>	<b>3453 (100%)</b>

Table 2: **AIDS Cases — by AGE**

Age	Cases (%)	Deaths
0-12	24 (1%)	14 (58%)
13-19	17 (0%)	
20-29	566 (16%)	
30-39	1545 (45%)	1984 (57%)
40-49	941 (27%)	
50+	384 (11%)	
<b>Total</b>	<b>3477 (100%)</b>	<b>1998 (57%)</b>

Table 4: **AIDS Cases — by Pediatric Risk Categories**

Risk Factors (peds)	Males	Females	Total
Mother with HIV	9 (75%)	11 (92%)	20 (83%)
Hemophilia	2 (17%)		2 (8%)
Transfusion	1 (8%)		1 (4%)
Risk Not Reported	0 (0%)	1 (8%)	1 (4%)
<b>Total</b>	<b>12 (100%)</b>	<b>12 (100%)</b>	<b>24 (100%)</b>

# Pinellas County HIV Statistics

All Pinellas County HIV data is cumulative from 7/1/97 to May 1, 2002  
 Source: Pinellas County Health Department, HIV/AIDS Surveillance



Table 5: **HIV Cases — by RACE**

Race	Adults	Pediatric	Total
White	426 (55%)	3 (60%)	429 (55%)
Black	286 (38%)	2 (40%)	288 (37%)
Hispanic	40 (5%)		40 (5%)
Asian/Pacific Is.	5 (1%)		5 (1%)
Am.Indian/AK. Native	3 (0%)		3 (0%)
Unknown	12 (2%)		12 (2%)
<b>Total</b>	<b>772 (100%)</b>	<b>5 (100%)</b>	<b>777 (100%)</b>

Table 7: **HIV Cases — by Adult Risk Categories**

Risk Factors (adults)	Males	Females	Total
Gay/Bisexual Men	292 (54%)		292 (38%)
Injecting Drug Users	56 (10%)	46 (20%)	102 (13%)
Gay/ Bi Male & IDU	28 (5%)		28 (4%)
Heterosexual Contact	36 (7%)	80 (34%)	116 (15%)
Transfusion Recipients	2 (1%)	1 (0%)	3 (0%)
Coagulation Disorder	0 (0%)		0 (0%)
Risk Not Reported	126 (23%)	105 (45%)	231 (30%)
<b>Total</b>	<b>540 (100%)</b>	<b>232 (100%)</b>	<b>772 (100%)</b>

Table 6: **HIV Cases — by AGE**

Age	Cases (%)	Deaths
0-12	5 (0%)	0 (0%)
13-19	31 (4%)	
20-29	193 (24%)	
30-39	314 (41%)	17 (2%)
40-49	169 (23%)	
50+	65 (8%)	
<b>Total</b>	<b>777 (100%)</b>	<b>17 (2%)</b>

Table 8: **HIV Cases — by Pediatric Risk Categories**

Risk Factors (peds)	Males	Females	Total
Mother with HIV	1 (100%)	2 (100%)	3 (60%)
Risk Not Reported		2 (50%)	2 (40%)
<b>Total</b>	<b>1 (100%)</b>	<b>4 (100%)</b>	<b>5 (100%)</b>

# Pasco County AIDS Statistics

All Pasco County AIDS data is cumulative from 1981 to May 1, 2001  
 Source: Pinellas County Health Department, HIV/AIDS Surveillance

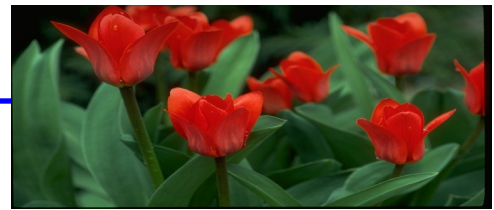


Table 9: **AIDS Cases — by RACE**

Race	Adults	Pediatric
White	470 (83%)	
Black	55 (10%)	3
Hispanic	36 (6%)	
Other/Unknown	4 (1%)	
<b>Total</b>	<b>565 (100%)</b>	<b>3 (100%)</b>

Table 11: **AIDS Cases — by Adult Risk Categories**

Risk Factors (adults)	Males	Females	Total
Gay/Bisexual Men	260 (55%)		260 (46%)
Injecting Drug Users	69 (15%)	28 (30%)	97 (17%)
Gay/ Bi Male & IDU	46 (10%)		46 (8%)
Heterosexual Contact	39 (8%)	49 (53%)	88 (16%)
Transfusion Recipients	13 (3%)	3 (3%)	16 (3%)
Coagulation Disorder	3 (1%)		3 (1%)
Risk Not Reported	39 (8%)	13 (14%)	52 (9%)
<b>Total</b>	<b>469 (100%)</b>	<b>93 (100%)</b>	<b>562 (100%)</b>

Table 10: **AIDS Cases — by AGE**

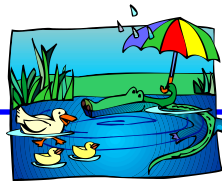
Age	Cases (%)	Deaths
0-12	3 (0%)	
13-19	4 (1%)	
20-29	85 (15%)	
30-39	256 (45%)	
40-49	144 (26%)	
50+	73 (13%)	
<b>Total</b>	<b>565 (100%)</b>	<b>314 (56%)</b>

Table 12: **AIDS Cases — by Pediatric Risk Categories**

Risk Factors (peds)	Total
Mother with HIV	3 (100%)
Risk Not Reported	
<b>Total</b>	<b>3 (100%)</b>

# Pasco County HIV Statistics

All Pasco County HIV data is cumulative from 7/1/97 to May 1, 2001  
 Source: Pinellas County Health Department, HIV/AIDS Surveillance



*Due to the fact that some of the cell sizes for Pasco County were <3, some of the data has not been completely stratified.*

Table 13: **HIV Cases — by RACE (adults only)**

Race	Adults
White	91 (70%)
Black	19 (15%)
Hispanic	14 (11%)
Other/Unknown	6 (5%)
<b>Total</b>	<b>130 (100%)</b>

Table 15: **HIV Cases — by Adult Risk Categories**

Risk Factors (adults)	Males	Females	Total
Gay/Bisexual Men	39 (42%)		39 (30%)
Injecting Drug Users	12 (13%)	5 (13%)	17 (13%)
Gay/ Bi Male & IDU	7 (8%)		7 (5%)
Heterosexual Contact	6 (7%)	20 (53%)	26 (20%)
Risk Not Reported/Other	28 (30%)	13 (34%)	41 (32%)
<b>Total</b>	<b>92 (100%)</b>	<b>38 (100%)</b>	<b>130 (100%)</b>

Table 14: **HIV Cases — by AGE**

Age	Cases (%)	Deaths
0-19	8 (6%)	
20-29	40 (31%)	
30-39	49 (38%)	
40-49	18 (14%)	
50+	15 (11%)	
<b>Total</b>	<b>130 (100%)</b>	<b>0 (0%)</b>

There have been no HIV pediatric cases reported for Pasco County as of July 1997.

# Hillsborough AIDS Statistics

All Hillsborough County AIDS data is cumulative from 1981 to April 30, 2002  
 Source: Florida Department of Health, Bureau of HIV/AIDS

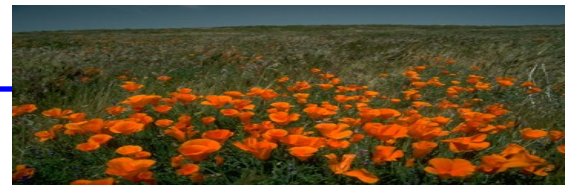


Table 16: AIDS Cases — by RACE

Race	Adults	Pediatric	Total
White	2569 (52%)	17 (23%)	2586 (52%)
Black	1716 (35%)	44 (58%)	1760 (35%)
Hispanic	636 (13%)	14 (19%)	650 (13%)
Asian/Pacific Is.	8 (0%)		8 (0%)
Am.Indian/AK. Native	5 (0%)		5 (0%)
Unknown	0 (0%)		0 (0%)
<b>Total</b>	<b>4934 (100%)</b>	<b>75 (100%)</b>	<b>5009 (100%)</b>

Table 18: AIDS Cases — by Adult Risk Categories

Risk Factors (adults)	Males	Females	Total
Gay/Bisexual Men	2437 (63%)		2437 (49%)
Injecting Drug Users	551 (14%)	289 (29%)	840 (17%)
Gay/ Bi Male & IDU	305 (8%)		305 (6%)
Heterosexual Contact	345 (8%)	503 (51%)	848 (17%)
Transfusion Recipients	29 (1%)	27 (3%)	56 (1%)
Coagulation Disorder	18 (0%)	1 (0%)	19 (0%)
Risk Not Reported	268 (6%)	161 (16%)	429 (9%)
<b>Total</b>	<b>3953 (100%)</b>	<b>981 (100%)</b>	<b>4934 (100%)</b>

★ ★ ★ ★ ★ ★ ★ ★ ★ ★ ★ ★ ★ ★ ★ ★ ★ ★

Table 17: AIDS Cases — by AGE

Age	Cases (%)	Deaths
0-4	58 (1%)	30 (40%)
5-12	17 (0%)	
13-19	28 (1%)	
20-29	910 (18%)	
30-39	2199 (44%)	2736 (55%)
40-49	1239 (25%)	
50-59	398 (8%)	
60-64	84 (2%)	
65-69	40 (1%)	
70+	36 (1%)	
<b>Total</b>	<b>5009 (100%)</b>	<b>2766 (55%)</b>

Table 19: AIDS Cases — by Pediatric Risk Categories

Risk Factors (peds)	Males	Females	Total
Mother with HIV	30 (79%)	36 (97%)	66 (88%)
Hemophilia	3 (8%)		3 (4%)
Transfusion	4 (11%)		4 (5%)
Risk Not Reported	1 (3%)	1 (3%)	2 (3%)
<b>Total</b>	<b>38 (100%)</b>	<b>37 (100%)</b>	<b>75 (100%)</b>

★ ★ ★ ★ ★ ★ ★ ★ ★ ★ ★ ★ ★ ★ ★ ★ ★ ★

# Hillsborough HIV Statistics

All Hillsborough County HIV data is cumulative from 7/1/97 to April 30, 2002  
 Source: Florida Department of Health, Bureau of HIV/AIDS

You can get Hillsborough and other Florida county data  
 on the Florida Department of Health website:  
[www.doh.state.fl.us](http://www.doh.state.fl.us)  
 (once at the site click on "AIDS/HIV")




Table 20: HIV Cases — by RACE

Race	Adults	Pediatric	Total
White	555 (36%)	2 (13%)	557 (36%)
Black	782 (51%)	12 (80%)	794 (51%)
Hispanic	191 (12%)	1 (7%)	192 (12%)
Asian/Pacific Is.	5 (0%)		5 (0%)
Am.Indian/AK. Native	0 (0%)		0 (0%)
Unknown	6 (1%)		6 (1%)
<b>Total</b>	<b>1539 (100%)</b>	<b>15 (100%)</b>	<b>1554 (100%)</b>

Table 22: HIV Cases — by Adult Risk Categories

Risk Factors (adults)	Males	Females	Total
Gay/Bisexual Men	446 (47%)		446 (29%)
Injecting Drug Users	70 (7%)	84 (14%)	154 (10%)
Gay/ Bi Male & IDU	39 (4%)		39 (3%)
Heterosexual Contact	116 (12%)	234 (39%)	350 (23%)
Transfusion Recipients	0 (0%)	1 (0%)	1 (0%)
Coagulation Disorder	1 (0%)		1 (0%)
Risk Not Reported	286 (30%)	262 (45%)	548 (36%)
<b>Total</b>	<b>958 (100%)</b>	<b>581 (100%)</b>	<b>1539 (100%)</b>

★ ★ ★ ★ ★ ★ ★ ★ ★ ★ ★ ★ ★ ★ ★ ★ ★ ★

Table 21: HIV Cases — by AGE

Age	Cases (%)	Deaths
0-4	9 (1%)	0 (0%)
5-12	6 (0%)	
13-19	51 (3%)	
20-29	390 (25%)	
30-39	591 (38%)	51 (3%)
40-49	368 (24%)	
50-59	99 (6%)	
60-64	21 (1%)	
65-69	10 (1%)	
70+	9 (1%)	
<b>Total</b>	<b>1554 (100%)</b>	<b>51 (3%)</b>

Table 23: HIV Cases — by Pediatric Risk Categories

Risk Factors (peds)	Males	Females	Total
Mother with HIV	9 (100%)	5 (83%)	14 (93%)
Risk Not Reported		1 (17%)	1 (7%)
<b>Total</b>	<b>9 (100%)</b>	<b>6 (100%)</b>	<b>15 (100%)</b>



# Florida HIV/AIDS Statistics

Source: Florida Department of Health, Bureau of HIV/AIDS  
 HIV/AIDS, STD & TB Monthly Surveillance Report, #212  
 If additional state data is needed please go to "www.doh.state.fl.us"

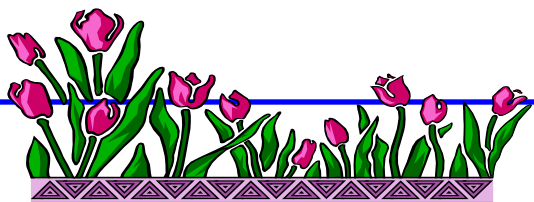


Table 24: **Cumulative HIV Case Counts for Florida**  
 (7/1/97-3/31/02)

	HIV	Deaths
Total	24964	500 (2%)
Adult	24728	496 (2%)
Pediatric	236	4 (1%)

Table 26: **Cumulative HIV/AIDS Case Counts in Surrounding Counties**  
 (as of 3/31/02)

County	HIV	AIDS
Hillsborough	1527	4971
Pinellas	761	3457
Polk	417	1362
Sarasota	154	835
Manatee	198	801
Pasco	129	567
Hernando	56	190
Highlands	84	161
Hardee	24	70

Table 27: **Cumulative HIV/AIDS Case Counts in the Top 7 Florida Counties**  
 (as of 3/31/02)

County	HIV	AIDS
Dade	7620	25702
Broward	4279	13803
Palm Beach	1944	8354
Orange	1981	5136
Hillsborough	1527	4971
Duval	1191	4346
Pinellas	761	3457

Table 25: **Cumulative AIDS Case Counts for Florida**  
 (through 3/31/02)

	AIDS	Deaths
Total	86855	46913 (54%)
Adult	85396	46112 (54%)
Pediatric	1459	801 (55%)

# United States HIV/AIDS Statistics

Adults & Children estimated to be **living** with HIV/AIDS in U.S.: 920,000  
 Estimated number of adults & children **newly** infected with HIV in U.S. during 2000: 45,000

Table 28: **Cumulative HIV/AIDS Case Counts for U.S.**  
 (as of 3/31/02)

	HIV	AIDS	% AIDS Deaths
Total	180302	825632	57%
Adult	176309	816490	57%
Pediatric	3993	9142	58%

(Source: Florida HIV/AIDS, STD & TB Monthly Surveillance Report, #212)

*Beth Gustafson is responsible for compiling and editing the HIV/AIDS Surveillance Statistics for the Pinellas and Pasco County Health Departments on a quarterly basis. For further information regarding statistics, or questions regarding HIV or AIDS reporting, please contact Beth at (727) 824-6903*

Table 29: **Cumulative HIV\* Cases of 5 Leading U.S. States**  
 (as of 2/28/02)

1. Florida (7/97)	24790	(14%)
2. New York (12/00)	22764	(12%)
3. New Jersey (1/92)	15310	(8%)
4. Texas (2/94)	11846	(7%)
5. North Carolina (2/90)	10991	(6%)

(Source: Florida HIV/AIDS, STD & TB Monthly Surveillance Report, #212)

\* Data only from those states where HIV is reportable & includes only persons reported with HIV infection who have not developed AIDS

Table 30: **Cumulative AIDS Cases of 20 Leading U.S. Cities**  
 (as of 6/30/01)

1. New York City	122062	11. San Juan, PR	15958
2. Los Angeles	42796	12. Baltimore	15009
3. San Francisco	28212	13. Boston	14645
4. Miami	24838	14. Ft. Lauderdale	13306
5. Washington DC	24029	15. Dallas	12672
6. Chicago	22217	16. San Diego	10820
7. Houston	19582	17. Tampa-St Pete	8726
8. Philadelphia	19605	18. Oakland	8227
9. Newark	17472	19. Detroit	7993
10. Atlanta	16423	20. West Palm Beach	7899

(Source: Centers for Disease Control, HIV/AIDS Surveillance Report, Vol. 13, No. 1)

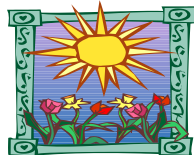


Table 31: **Cumulative AIDS Cases of 10 Leading U.S. States**  
 (as of 3/31/02)

1. New York	150372	(18%)
2. California	124834	(15%)
3. Florida	86793	(10%)
4. Texas	57390	(7%)
5. New Jersey	44205	(5%)
6. Illinois	26729	(3%)
7. Pennsylvania	26646	(3%)
8. Georgia	24981	(3%)
9. Maryland	23956	(3%)
10. Massachusetts	17176	(2%)

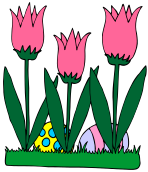
(Source: Florida HIV/AIDS, STD & TB Monthly Surveillance Report, #212)

# World HIV/AIDS Statistics

From W.H.O. (www.who.int) & UNAIDS (www.unaids.org):  
**Reported World AIDS Cases as of 11/01: 2,784,317**  
**Estimated living World HIV/AIDS Cases as of 2001: 40 million**  
**Estimated new HIV infections in World in 2001: 5 million**  
**Estimated World deaths due to HIV/AIDS in 2001: 3.0 million**  
**Estimated Cumulative number of deaths in World due to HIV/AIDS: 21.8 million**



- Here are some useful Web links/sites for HIV/AIDS information:*
- <http://www.doh.state.fl.us>
  - <http://www.cdc.gov>
  - <http://www.who.int>
  - <http://www.paho.org/english/aid/aidstd.htm>
  - <http://www.iapac.org>
  - <http://www.flairs.org/tcrs/aidslne.htm>
  - <http://hivinsite.ucsf.edu>
  - <http://www.hivatis.org/trtgdlns.html>
  - Florida HIV/AIDS statistics
  - Centers for Disease Control
  - World Health Organization
  - PAHO: AIDS site
  - Int'l Assoc of Physicians in AIDS care
  - Florida AIDS Hotline site
  - HIV/AIDS InSite Information
  - HIV/AIDS treatment site



**HIV/AIDS Surveillance Office**  
Pinellas County Health Department  
500 7<sup>th</sup> Ave South  
St Petersburg, FL 33701

**Voluntary Testing in Urban Hospitals Could Help Detect Undiagnosed HIV**

(<http://www.kaisemetwork.org>, 4/22/02)

According to a recent study published in the Archives of Internal Medicine, offering voluntary, routine HIV testing in urban hospitals could identify a significant number of individuals with undiagnosed HIV. Researchers (Walensky, et al) from Massachusetts General Hospital, the Boston University School of Public Health and Boston Medical Center implemented the "Think HIV" program at Boston Medical Center. The program offered voluntary HIV counseling and testing to all patients admitted to the medical service of the hospital between April 1 and Dec. 31, 1999. Under the program, medical staff asked patients whether they were interested in speaking with someone about HIV testing. If a patient expressed interest, a voice mail message was left for a counselor. The counselor would visit the patient at the hospital, discuss HIV testing, complete pre-test counseling and conduct an HIV test. Patients who had been discharged were given outpatient appointments to receive their test results one week following the screening, and those who remained inpatients were given their results in the hospital when they became available. Patients who tested positive were referred to the HIV Diagnostic Evaluation Unit, which links HIV-positive individuals with medical care. Researchers compared the patterns in HIV testing and diagnosis during the program to a 15 month control period spanning from Jan. 1, 1998 to March 30, 1999. Before the implementation of the program, approximately 2% of all patients were referred for HIV testing and counseling, and testing was generally performed on patients with one or more clear risks and/or signs of HIV infection. Patients admitted during the program period were 3.4 times more likely to get tested for HIV than those admitted during the control period. The Think HIV program detected approximately two new HIV infections per month, while only one infection per month was identified during the control period. In addition, patients who were tested during the program, would likely not have been screened otherwise, and had an estimated HIV positivity rate of 3.8%. **The researchers concluded that offering HIV testing only to symptomatic, high-risk patients is a less than optimal approach to the identification of the 33% of HIV-positive Americans who have not been screened for the virus.**

**Florida law requires cases of AIDS to be reported by anyone who diagnoses or treats a person with AIDS, with a \$500 fine per case for failure to report.**

**NOTE: A person who tests positive for Human Immunodeficiency Virus (HIV) on or after July 1, 1997 is reportable. Confidentiality is guaranteed.**

**BETH GUSTAFSON, MPH  
PINELLAS COUNTY HEALTH DEPARTMENT  
500 7TH AVENUE SOUTH  
ST PETERSBURG, FL 33701  
(727) 824-6903 ; SUNCOM 539-6903  
FAX: (727) 893-1681  
EMAIL: BETH\_GUSTAFSON@DOH.STATE.FL.US**

**If you need reporting forms, would like to have a brief HIV/AIDS Surveillance In-Service for your staff in your office, or would like to have your HIV/AIDS cases reviewed in your office, please call the above number and speak to Beth Gustafson, Erica Amato, Dolores (De) Wengrzyn, Ray Sanderlin or Dr. Beale Morgan.**

