

FAMILY CHILD CARE CENTERS

SPRING EDITION

TAMMY'S TIPS

By Tammy Sharpe, Centers Supervisor



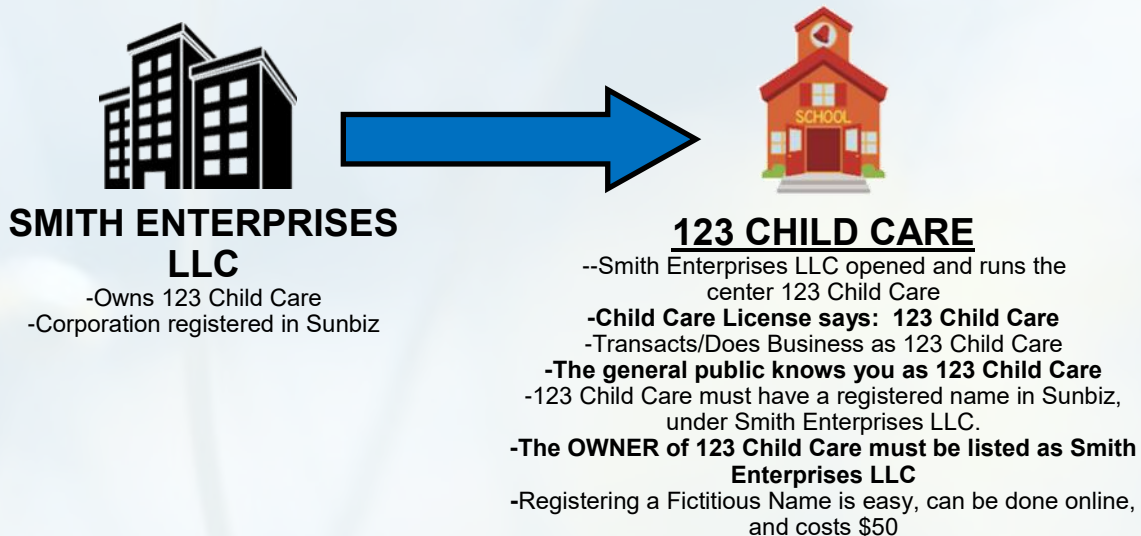
Happy New Year, and Happy Spring to all our centers!

In the last few newsletters, we have been reminding everyone of several items that we here at licensing continue to see happening again and again. Please read these tips carefully so that we can avoid fines, delays, extra costs, and headaches for everyone.

- ⇒ A **Change of Ownership** means there is a change in who is managing the facility. This requires a change of ownership agreement submitted to licensing **45 days PRIOR to the sale being final**. If you work with ELC, you must notify them, as well as any changes to Sunbiz.
- ⇒ The **name your center is doing business as must match what is in Sunbiz**. If there is a corporation that runs the center, but it does business as something else, you must register a fictitious name under your business name, so that people know which business entity is transacting business.

After auditing our files, it has come to light that there are discrepancies in the names of licenses, businesses, owners, and what is registered with the state. We are now working diligently to make sure everything matches.

For example, if there was a center called 123 Child Care, this is the name on their signs, their marketing materials, etc., but Smith Enterprises LLC is the owner, a fictitious name must be registered with Sunbiz for 123 Child Care. Smith Enterprises LLC should have its own recorded entity under business or corporations. Smith Enterprises LLC needs to show as the owner of the fictitious name. Please see this example:



PLEASE NOTE, IF THIS IS NOT DONE COMPLETELY AND CORRECTLY, IT MAY CAUSE A PROBLEM WITH ELC AND/OR YOUR LICENSE RENEWAL.

Call our office for assistance and explanations.

(Continued next page)

QUARTERLY NEWS!

Child Care Licensing Program
Florida Department of Health in Pinellas County

Centers
Spring



Tammy's Tips Cont'd...

- ⇒ If you have an **incident or accident that needs to be reported to child care**, especially if it involves police, 911 services or abuse, please **call the office and speak to someone directly**. Please **DO NOT email** your specialist, also **DO NOT leave them a voice mail**. Please call the office at 727-507-4857. After hours and on weekends you have the option to speak to someone in an emergency, or leave a voicemail for the office to get the next morning they come in. Incidents and accidents are required to be reported to child care licensing within 24 hours per regulations.
- ⇒ **Physicals** that come from someone other than the Department of Health have been a hot topic recently. The regulations state that the physical must be on the form DH 3040 from the Department of Health, **OR** a signed statement by authorized professionals that indicate the results of the components of the Student Health Examination Form included on form DH 3040. This means if it is not on the Department of Health form, it must be completed by a doctor, dated with the date of the exam, and have all the same information that form DH 3040 has. As long as the form submitted meets those requirements, you can accept it. Immunizations, however, must be on forms DH 680 or DH 681.
- ⇒ On January 11th, Paula sent out a notice about **ELC's New Training Requirements for School Readiness Providers**. You can read the bulletin at this link. Please note that all current SR child care personnel have until June 30, 2024, to complete these new trainings. This is required to stay in compliance.
- ⇒ Recently there has been an uptick in issues with **transitions and children being left behind**. Please remind your staff to count the kids before and then again after a transition.

For example, if a classroom is getting ready to go outside, have the teacher count the children. Once they are outside, the teacher needs to count the children again to confirm the same number; and then count again when they return to the classroom.
- ⇒ If you are going to be **installing or upgrading a playground and/or play equipment**, please be sure all Pinellas County regulations are followed by any contractors/installers that may do work on the playground. Any new playground equipment installed must be inspected by licensing before using. Please refer to the "Outdoor Play Space" section in the regulations.
- ⇒ **Any large/major changes to your center**, both inside and out, always must meet regulations. **BEFORE** you begin a project, we highly suggest you call and speak with your specialist. Not only will they ensure you will not have extra costs if things do not meet regulation, but your specialist will be better prepared to come do an inspection as soon as the work is done, so you can begin to use it right away.

As always, if you have questions, please reach out to our office at 727-507-4857. We have a specialist on call every day to answer questions.



Tammy

QUARTERLY NEWS!

Child Care Licensing Program
Florida Department of Health in Pinellas County

Centers
Spring



Faith Bornoff, M.Ed.
Executive Director

Challenging Behaviors are not new, but there are ways to make them manageable. This article provides tips on how to avoid a tantrum resulting from challenging behavior patterns, but if one occurs there are also tips about how to help the child re-regulate.

The article '[5 components to transform behaviors](#)' by Prerna Richards discusses the 'Five Basic Needs for Children to Thrive'. They are:

1. being seen,
2. being heard,
3. being understood,
4. being accepted,
5. being loved.

When children are not having all their emotional needs met, they can tend to become over emotional and dysregulated. This in turn can lead to the child displaying challenging behaviors. If we make sure we are working on actively seeing the child, listening to them, accept them, understand them, and loving them, the chances of a challenging behavior event can decrease.

[Ron Spreeuwenberg](#) in his article "[Dealing with Challenging Toddler Behavior in the Classroom](#)" advises that sometimes it can take time and trial and error to discover what kind of management technique works for each child. Mr. Spreeuwenberg goes on to remind us that positive reinforcement of good behavior is always a helpful technique to use. Having a regular daily schedule for the classroom and giving notice before activities change may also help. It is important to always keep the parents informed of how their child is doing, sharing both positive and negative behaviors.

When a child displays challenging behaviors, there are things that may help the child re-regulate. Sometimes the child needs space and time to get it all out. A diversion might work to change their focus on why they are upset. Speak in a calm voice to the child and try to understand why the child is having an emotional moment. Moving the child to another part of the room may help the child refocus. Sometimes getting them away from where they were triggered helps them to self-regulate on their own. In some cases, a child may self-regulate when less attention is drawn to the behavior.

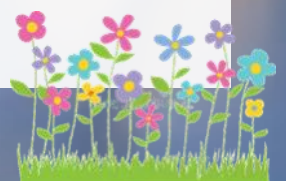
Another article, "[How to Handle Temper Tantrums in Early Childhood Care](#)," explains how the adult should handle themselves while helping the child work through emotional situations. It is always a good idea to stop and take 5 breaths before taking any action. This will help you to remain calm and will in turn give you time to decide how best to proceed with the child. You may even want to try having the child take deep breaths with you to help them calm down at the same time.

Lastly, the article "[Dealing with Temper Tantrums in Child Care](#)" provides good behavior management ideas such as giving the children a warning before an activity ends, challenging them with ways they can be successful, without frustrating them, or offering the children choices..

If you read all these articles, you will notice some similar trends. Try to meet the children's emotional needs at their level to avoid challenging behaviors. Stay calm, pause before you act, distract, or move the child from where they were when they triggered, offer choices, and give warnings when activity is about to end. Above all else, no physical form of punishment. should ever be used when dealing with children displaying challenging behaviors.

Above all, thank you for everything you do to meet the physical, social, and emotional needs of the children in Pinellas County. Your work makes a difference in so many lives!

Faith



QUARTERLY NEWS!

Child Care Licensing Program
Florida Department of Health in Pinellas County

Centers
Spring



NEWS FROM EPIDEMIOLOGY

Increase in Chickenpox Cases in Pinellas County

By: Rachel J. Ilic, MPH, CPH, CIC

The Florida Department of Health in Pinellas County (DOH-Pinellas) has identified an increase in varicella (chickenpox) in unvaccinated children and would like to share information with the childcare community. Per the January 2024 DOH Vaccine-Preventable Disease Surveillance Report, Varicella activity is above the previous 5-year average, with 53 cases reported in January. Cases were highest among those under 1 year old.

Chickenpox is a highly contagious illness that can begin with flu-like symptoms including fever and malaise. These first symptoms usually appear 10-21 days after a person is exposed. In children, the first symptoms may be a rash that typically begins on the head, chest, and back and then moves to the rest of the body. Some individuals with chickenpox have very mild symptoms with few lesions, particularly in healthy children that have been previously vaccinated. The rash heals by scabbing over; when the last blister has scabbed over the child is no longer contagious. Testing is available through primary care providers and involves swabbing the fluid filled blisters.

Chickenpox is spread by coughing and sneezing (like a cold), or by touching items that have saliva on them. It can also be spread by contact with fluid from the rash blisters, but this is less common. It is usually a mild disease, but some people may develop serious infection. People who have more risk of this serious form are:

- People who have not had chickenpox
- People who have weakened immune systems
- Pregnant Women

Immunization is the best preventive measure against chickenpox. The vaccine is 70-90% effective in preventing mild disease, and 95% effective in preventing severe disease. DOH-Pinellas recommends parents check with their child's doctor to have their immunization history verified and brought up to date.

Chickenpox can spread easily among unvaccinated household members and in group settings such as classrooms and childcare facilities. DOH-Pinellas recommends exclusion for children who are experiencing a febrile rash illness.

For more information or additional guidance, please visit the Centers Disease Control and Prevention (<https://www.cdc.gov/chickenpox/index.html>) .

The DOH Vaccine-Preventable Disease Surveillance Report is available here: [Vaccine Preventable Diseases \(VPD\) | Florida Department of Health \(floridahealth.gov\)](https://www.floridahealth.gov/vaccine-preventable-diseases/vpd/)

Questions related to Chickenpox outbreaks can be directed to
Florida Department of Health in Pinellas County,
Epidemiology Program at :
727-824-6932

During the first 25 years,*
the U.S. chickenpox
vaccination program
has **PREVENTED**
an estimated:

	91 million CASES
	238,000 HOSPITALIZATIONS
	2,000 DEATHS

*The U.S. chickenpox vaccination program started in 1995.

Florida Department of Health in Pinellas County
205 Dr. Martin Luther King Jr. St. N.,
St. Petersburg, Florida 33701

QUARTERLY NEWS!

Child Care Licensing Program
Florida Department of Health in Pinellas County

Centers
Spring



UPCOMING TRAININGS

RECORD KEEPING FOR CHILDREN'S CENTERS

Is a four and a half (4 1/2) hour training comprised of an overview of regulations regarding record keeping including personnel, children, and facility records. Participants will receive a training packet that includes required and optional forms and learn practical ideas for setting up and maintaining files in order to be in compliance with regulations. This training is appropriate for prospective or new owners/directors and as an update for current child care personnel with record keeping responsibilities. A certificate documenting four and a half (4.5) hours of annual in-service training will be issued.

Registration Fee: \$40 prepaid prior to training, non-refundable
Class Time: 8:30am—1:00pm



**TUES
MAR
7**

PINELLAS DIRECTOR'S BASICS

Is a three (3) hour training required for new directors who have not been directors previously in Pinellas County or have not been a director in Pinellas County in the last 12 months. This course is designed to foster success by covering regulations unique to Pinellas County, our website as a resource and best management practices. A certificate documenting three (3) hours of annual in-service training will be issued.

Registration Fee: \$25 pre-paid prior to training, non-refundable
Time: 9:00am—12:00pm



**TUES
APR
11**

DIRECTOR'S ORIENTATION FOR INFANT CARE

Is a three (3) hour training comprised of regulations pertaining specifically to infant care and best practices in caring for children from birth to 2 years of age. Participants will receive a training packet that includes a copy of the Infant Standards, required and sample forms, and brochures. This training is required for directors who plan to start an infant program. A certificate documenting three (3) hours of annual in-service training will be issued.

Registration Fee: \$25 pre-paid prior to training, non-refundable
Class time: 9:00am—1:00pm



**TUES
MAY
9**

All classes are held at 8751 Ulmerton Road, Largo 33774

These classes are subject to cancellation based on restrictions and requirements in the state at that time.

Call the CCLP office prior to class if you need to reschedule in order to avoid repaying the registration fee.

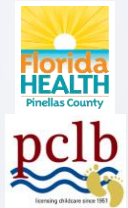
Any persons with a disability requiring reasonable accommodations should call the CCLP office no later than two (2) weeks prior to the training.

Please call 727-507-4857 to register for a class.

QUARTERLY NEWS!

Child Care Licensing Program
Florida Department of Health in Pinellas County

Centers
Spring



Huihuang Trading recalled **Fishing Games** due to magnet ingestion hazard, violation of the Federal Safety Regulation for Toys (sold on Amazon).

Consumer Contact:
E-Mail: safety@operationagency.com



DailySale recalled **High-Powered Magnetic Balls** due to ingestion hazard; violation of the Federal Safety Regulation for Toy Magnet Sets.

Consumer Contact:
website: <https://dailysale.com/pages/recall>
E-Mail: recall@dailysale.com



WanaBana apple cinnamon fruit puree, including three packs; **Schnucks**-brand cinnamon-flavored applesauce pouches and variety pack; **Weis**-brand cinnamon applesauce pouches; recalled due to elevated levels of lead

Consumer Information:
<https://www.fda.gov/food/outbreaks-foodborne-illness/investigation-elevated-lead-chromium-levels-cinnamon-applesauce-pouches-november-2023>



Yaomiao Children's **Rhinestone Silver Tiara** recalled due to violation of Federal Lead Content Ban; sold on Amazon.

Consumer contact:
website: <https://www.amazon.com/s?me=A1ISSCMO2YO2PL&marketplaceID=ATVPDKIKX0DER>
email: simlordroadple@163.com

CPSC Consumer Information Hotline

Contact this toll-free number if you have questions about a recall:

800-638-2772 (TTY 301-595-7054) Times: 8 am – 5:30 pm ET. Messages can be left anytime.

Call to get product safety and other agency information and to report unsafe products.

<https://www.cpsc.gov/>

QUARTERLY NEWS!

Child Care Licensing Program
Florida Department of Health in Pinellas County

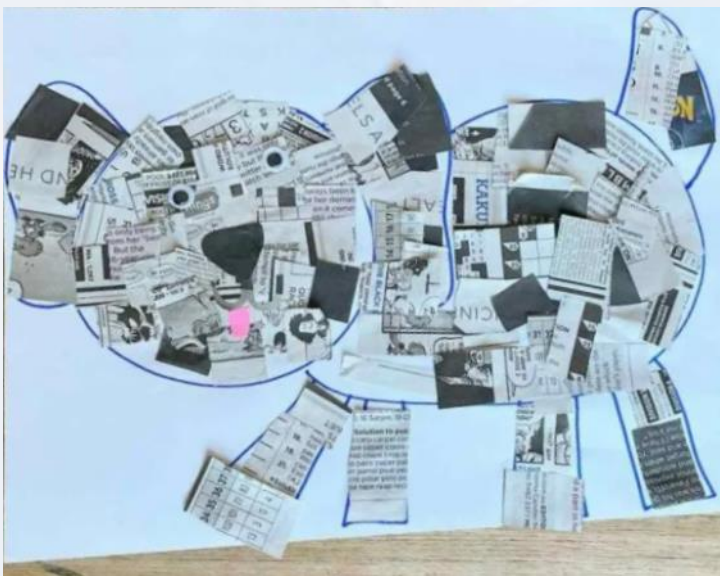
Centers
Spring



Creative Corner

Fun, educational activities kids LOVE!

<https://myboredtoddler.com/easy-crafts-for-toddlers/>



Finding crafts for young children can be difficult. This website offers multiple craft ideas to keep hands busy. Things such as a paper plate lion, summer flower craft, or a newspaper puppy paper craft. Each link for each craft also offers many tips and tricks as well as instructions on how to create the crafts.



If you would like your home or center to appear in a future Creative Corner, please email
karen.kirouac@flhealth.gov
or call 727-507-4857



QUARTERLY NEWS!

Child Care Licensing Program Florida Department of Health in Pinellas County



Spring 2024
Volume 7
Issue 1

FAMILY CHILD CARE CENTERS

SPRING EDITION

Employee Spotlight

We are proud to introduce you to our newest specialist, Kay Velardi! Kay comes to us with years of experience in the child care industry. She began her professional career in the Early Childhood Education field as a high-schooler. She did a work-study program with her school which allowed her to attend classes in the morning and then work in the afternoons at a licensed child care facility. From an early age Kay felt the calling to be a teacher. She loved little ones and the fun learning environment preschool provides. Kay got her degree in Education from Liberty University, and



spent the next 28 years working with children and families first as a home daycare owner/provider, then a preschool teacher and then a director.

Kay is a born and raised Floridian. In fact, she is a proud 5th generation Florida Native. The last few years, Kay and her family lived in the Keys, but recently relocated and settled in St. Petersburg. Kay enjoys spending time with her family which includes her husband Anthony and 3 children, and she loves to be on the water. Kay expressed that she "is very excited to have joined this amazing team at the Florida Department of Health as a child care licensing specialist" and that she looks forward to continuing to serve and protect the children of Pinellas County.



WELCOME KAY!

Child Care Licensing Program

Florida Department of Health in Pinellas, 8751 Ulmerton Road, Suite 2000, Largo, Florida 33771

727-507-4857 pclb.org

Vision

Every child has access to quality child care and education in an environment that values diversity.

Values

Commitment
Integrity
Quality

Mission

To protect and promote the health, safety, and mental development of children cared for in children's centers and family child care homes in Pinellas County.