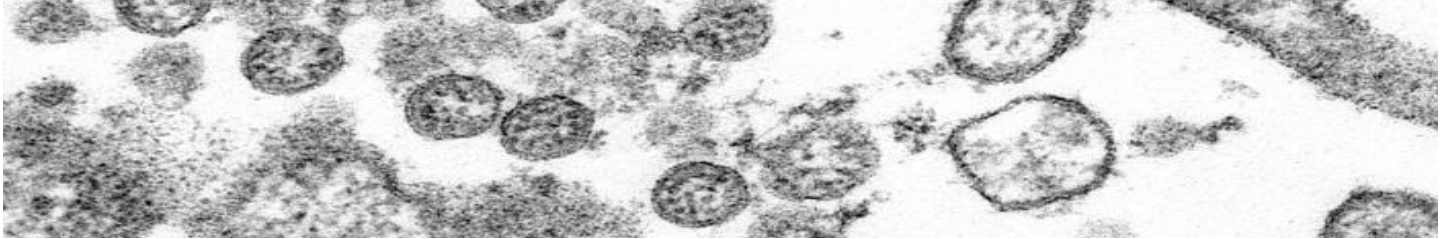




EPI WATCH

Monthly Epidemiology Newsletter



205 Dr. MLK Jr. St. N
St. Petersburg, FL 33701
(727) 824-6900

Director

Ulyee Choe, DO

Editors

JoAnne Lamb, MPH
JoAnne.Lamb@FLHealth.gov

Eliza Carroll

Eliza.Carroll@FLHealth.gov

Division of Disease Control and Health Protection

Disease Reporting

To report diseases and clusters of illness:

Phone: (727) 824-6932

Fax: (727) 484-3865

(excluding HIV/AIDS)

To report HIV/AIDS by mail:

Surveillance Room 3-138

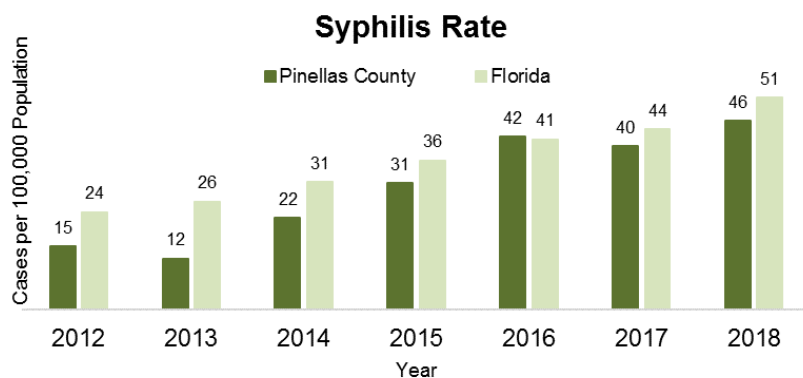
205 Dr. MLK Jr St. N

St. Petersburg, FL 33701

On Facebook, find us at
www.facebook.com/HealthyPinellas

Sexually Transmitted Diseases

In October 2019, Centers for Disease Control and Prevention (CDC) released a 5-year summary on reportable sexually transmitted disease (STD) trends in the United States. Chlamydia, gonorrhea, and syphilis were reported to be at all-time highs in the U.S. in 2018. After adjusting for population, Florida and Pinellas County both observed a stark increase in syphilis incidence rate between 2014 and 2018 (Florida: 66% increase, Pinellas County: 105% increase). The CDC identified multiple factors contributing to the increase in STD rates including poverty, illicit drug use, lack of stable housing, decrease in condom use, and financial cuts to state and local STD programs.¹



Syphilis incidence rate (cases/100,000 person-years) in Florida and Pinellas County, FL, 2012-2018.

Rates for 2019 and 2020 are currently pending; however, the Department of Health in Pinellas County continues to monitor cases and trends. On April 6, in anticipation of limited healthcare seeking behavior and restricted movement during the COVID-19 pandemic, the Department of Health and Human Services released guidance to healthcare providers on continuing to provide STD care and treatment.² The report urges clinics to remain open when feasible while prioritizing patient visits, providing telemedicine-based triage, and establishing relationships with other clinics and pharmacies to provide home or non-clinic based testing.

Please review the [HHS STD Treatment Recommendations](#) for more information.

New CDC Report: STDs Continue to Rise in the U.S. Centers for Disease Control and Prevention. <https://www.cdc.gov/nchstp/newsroom/2019/2018-std-surveillance-report-press-release.html>. Accessed 5/11/2020.

Department of Health and Human Services. <https://www.cdc.gov/std/dstdp/DCL-STD-Treatment-COVID19-04062020.pdf> (2020).

COVID-19 in Pinellas County

During the current COVID-19 pandemic, the Florida Department of Health has worked closely with the Centers for Disease Control and Prevention (CDC) to conduct heightened surveillance and quickly identify persons under investigation (PUI), cases and contacts to cases to limit the spread of SARS-CoV-2.

Pinellas County reported its first COVID-19 case on March 9, 2020, and in the following months over 900 cases have been reported (Figure 1). As of March 12, Sixty-four deaths have been reported in Pinellas County and over 32% of these deaths have occurred in the previous 10 days. Due to the novel nature of the virus, policy-makers implemented safer-at-home measure on March 26 to mitigate further spread in the community. As Phase 1 of Florida's Plan for Recovery has begun and Pinellas County moves to reduce safer-at-home orders, it is important to continue to protect yourselves and others by avoiding close contact, cleaning high traffic surfaces, wearing facial coverings in public, washing your hands, and staying home when sick.

For current Florida case counts, please visit the [DOH website](#) and [Dashboard](#). For more information on COVID-19 prevention visit the [CDC's COVID-19 Prevention Page](#).

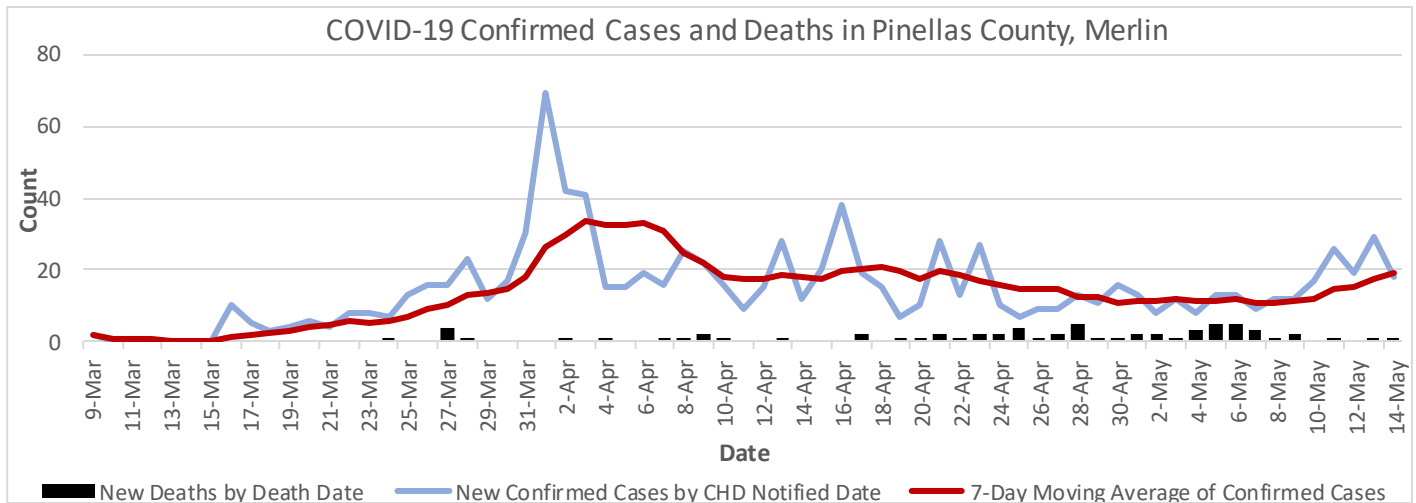


Figure 1. COVID-19 confirmed cases and deaths reported in Pinellas County by date of notification. Data is preliminary.

Fewer vaccines being administered during COVID-19 Pandemic

In a recent Morbidity and Mortality Weekly Report (MMWR) published by the CDC, researchers analyzed pediatric vaccination rates through the Vaccines for Children (VFC) Program, a federally funded program that provides vaccines to 50% of U.S. children under the age of 18, to understand the effect the pandemic has on preventive medicine.

Following the declaration of a national emergency on March 13, 2020, which encouraged safer-at-home measures, measles containing vaccines in children >24 months through 18 years fell dramatically in week 11 (March 8 - 14). This has remained suppressed through the most recent report of week 16. Rates differ slightly in children under the age of 24 months potentially due to Well Child Visit preventive care schedules recommended for infants. **The decline in routine vaccinations poses a potential threat of outbreaks in preventable disease.**

This report highlights the need for healthcare providers and public health officials to develop new approaches to ensure that children are receiving routine vaccination through outreaches and reorganized clinic structures.

The complete report can be found here: [CDC's MMWR Effects of the COVID-19 Pandemic on Routine Pediatric Vaccine Ordering and Administration](#).

2020 Cyclosporiasis Season

In preparation for Cyclosporiasis season from May to August, an updated [Cyclosporiasis National Hypothesis Generating Questionnaire \[CNHGGQ\]](#) has been developed to aid in interviewing laboratory confirmed or probable cases. As a reminder, please forward specimens to BPHL for inclusion in the [CDC's Cyclospora typing project](#), a program within the Advanced Molecular Detection Division working on typing Cyclospora specimens based on eight markers in the genome to aid in the identification of clusters.

Select Reportable Diseases in Pinellas County

Disease	Pinellas		YTD Total		Pinellas Annual Totals		
	Apr 2020	Apr 2019	Pinellas 2020	Florida 2020	2019	2018	2017
A. Vaccine Preventable							
Measles	0	1	0	1	1	7	0
Mumps	0	1	1	39	7	10	3
Pertussis	0	0	7	179	27	32	36
Varicella	0	3	12	206	33	67	24
B. CNS Diseases & Bacteremias							
Creutzfeldt-Jakob Disease (CJD)	0	2	0	6	3	1	2
Meningitis (Bacterial, Cryptococcal, Mycotic)	0	0	0	34	7	9	7
Meningococcal Disease	0	0	2	15	1	1	0
C. Enteric Infections							
Campylobacteriosis	15	24	84	1171	310	264	207
Cryptosporidiosis	2	2	11	120	64	34	40
Cyclosporiasis	0	0	1	3	28	4	6
<i>E. coli Shiga Toxin (+)</i>	1	0	4	185	24	15	22
Giardiasis	0	5	10	280	52	41	45
Hemolytic Uremic Syndrome (HUS)	0	0	0	2	1	0	0
Listeriosis	1	0	1	14	2	1	0
Salmonellosis	11	7	49	1240	201	233	279
Shigellosis	0	3	10	281	22	40	26
D. Viral Hepatitis							
Hepatitis A	0	56	2	548	377	113	1
Hepatitis B: Pregnant Woman +HBsAg	2	2	11	129	24	14	25
Hepatitis B, Acute	5	5	12	200	72	52	51
Hepatitis C, Acute	5	9	28	433	82	40	30
E. Vector Borne/ Zoonoses							
Animal Rabies	0	0	0	26	2	1	3
Rabies, possible exposure	6	11	42	1212	128	130	140
Chikungunya Fever	0	0	0	0	0	0	0
Dengue	0	0	0	26	3	0	0
Eastern Equine Encephalitis	0	0	0	0	0	0	0
Lyme Disease	1	0	1	53	22	14	19
Malaria	0	2	1	12	5	3	0
West Nile Virus	0	0	0	0	0	0	0
Zika Virus Disease	0	0	0	1	3	2	5
F. Others							
Chlamydia	215	434	1315	n/a	4588	4422	418
Gonorrhea	114	105	467	n/a	1537	1439	1574
Hansen's Disease	0	0	0	6	0	0	0
Legionellosis	2	2	11	211	43	37	28
Mercury Poisoning	0	0	0	6	1	1	1
Syphilis, Total	21	38	132	n/a	479	438	382
Syphilis, Primary and Secondary	10	14	56	n/a	213	190	160
Syphilis, Early Latent	6	18	50	n/a	191	158	128
Syphilis, Congenital	0	3	1	n/a	6	2	5
Syphilis, Late Syphilis	5	3	25	n/a	69	88	89
Tuberculosis	1	3	7	n/a	23	33	28
<i>Vibrio Infections</i>	2	0	3	31	18	6	11

*YTD up to May 01, 2020. n/a = not available at this time

Reportable diseases include confirmed and probable cases only. All case counts are current and provisional. Data is collected from the Merlin Reportable Disease database, surveillance systems maintained at the Florida Department of Health in Pinellas County, and Florida CHARTS <http://www.floridacharts.com/charts/default.aspx>. STD data in STARS is continually updated. Please note, data from the previous month takes up to an additional month or more to be correctly updated.