



Employee Health

Any associate diagnosed with or exposed to the following cannot report or return to work until authorized by a Health Practitioner or the Person In Charge (PIC):

SEND >>> Salmonella*
SICK >>> Shigella
EMPLOYEES >>> E. coli
HOME >>> Hepatitis A
NOW >>> Norovirus

Any associate displaying the following symptoms cannot work with or around food:

- Vomiting
- Diarrhea
- Sore Throat with a Fever
- Jaundice
- Unprotected & Infected Wounds

PIC: For additional information, refer to the decision charts on the back of this document

* Nontyphoidal Salmonella and Typhoid fever (Salmonella Typhi)

**SEND
SICK
EMPLOYEES
HOME
NOW**

If they are presenting any of the following:



[Diarrhea]



[Jaundice]



[Sore Throat with Fever]



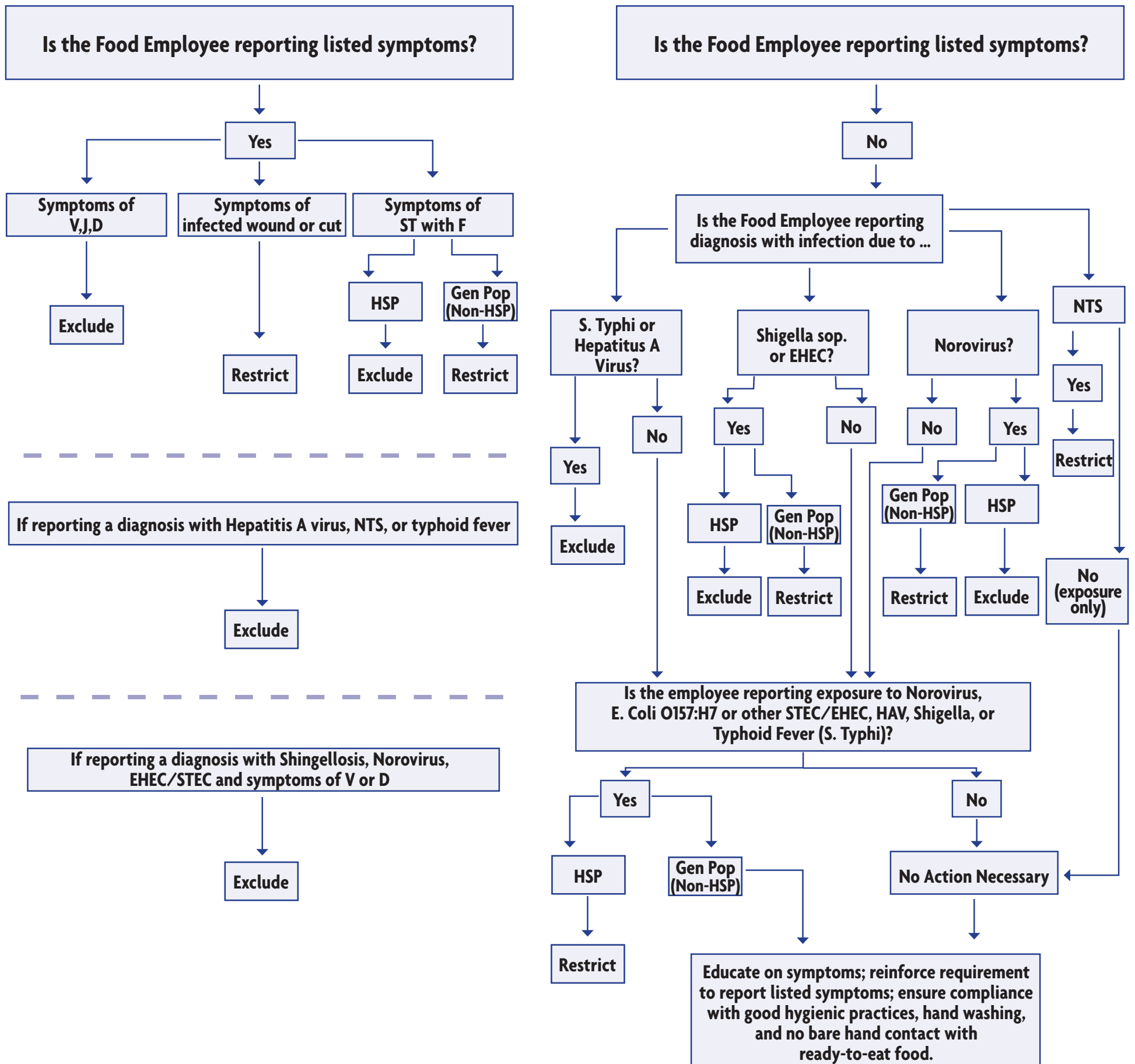
[Vomiting]



[Unprotected & Infected Wounds]



EMPLOYEE HEALTH DECISION TREE



2-201.11/2-201.12 Decision Tree 1 and 2

Key: (HSP) Highly Susceptible Population; (Gen. Pop.) General Population; (V) Vomiting; (J) Jaundice; (D) Diarrhea; (ST with F) Sore Throat with Fever; (EHEC) Enterohemorrhagic E. coli; (STEC) Shiga toxin - producing E. Coli; (HAV) Hepatitis A Virus. (NTS) = Nontyphoidal Salmonella

Additional information can be found in Annex 3 of the FDA Food Code (2.201.11/2.201.12).